

AENC-LSTC-ENG-DWG-0002

Norwich to Tilbury

Volume 2: Plans, Drawings and Sections

Document: 2.16 Trees and Hedgerows to be Removed and or Managed Plans - Section D

Final Issue A

August 2025

Planning Inspectorate Reference: EN020027

Infrastructure Planning (Applications: Prescribed Forms and Procedure) Regulations 2009 Regulation 5(2)(o)

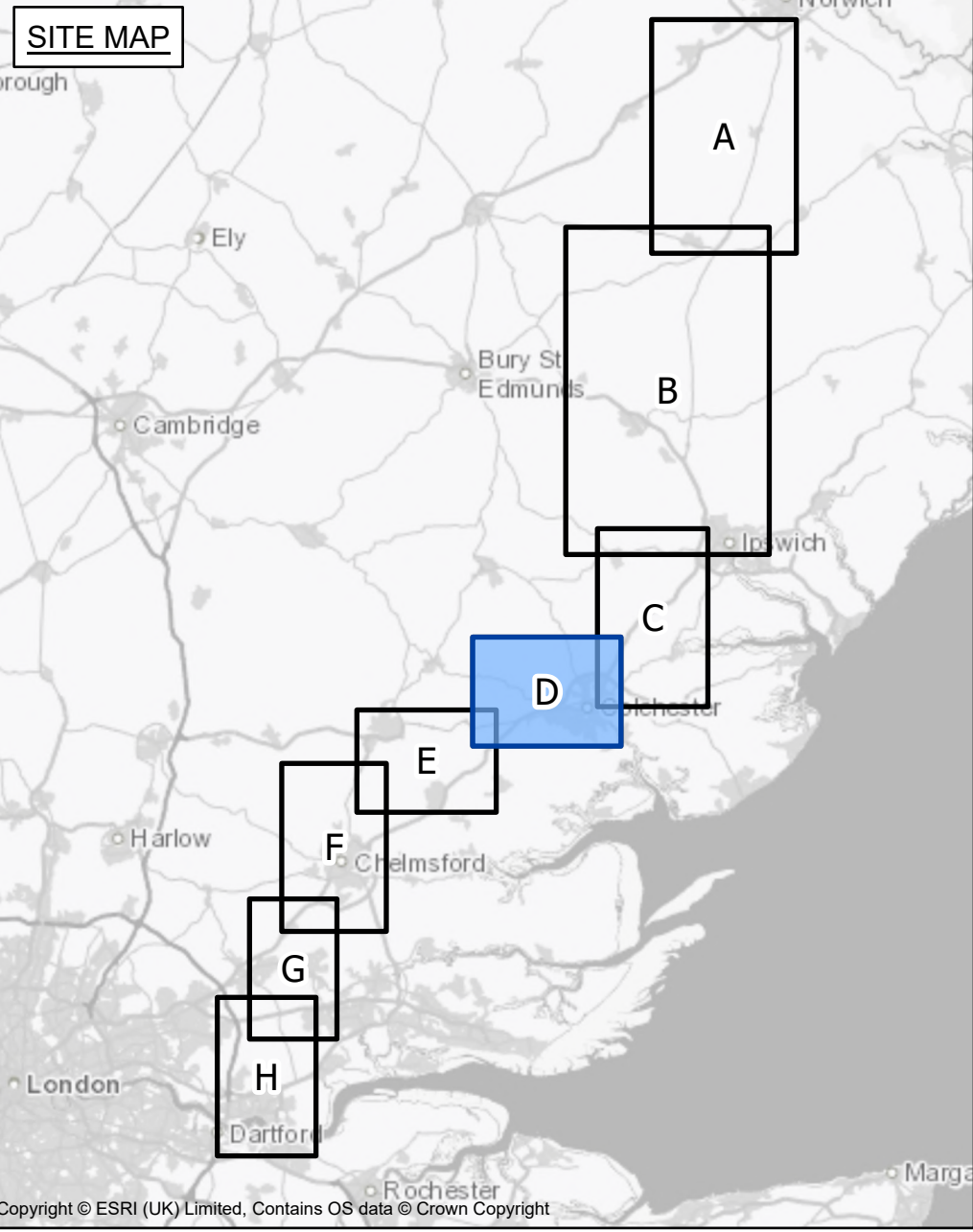
nationalgrid



THE NATIONAL GRID (NORWICH TO TILBURY) ORDER
TREES AND HEDGEROWS TO BE REMOVED AND OR MANAGED PLANS KEY PLAN
REGULATION 5(2)(o)
SECTION D (SHEET 1 OF 1,
BRAINTREE DISTRICT COUNCIL, COLCHESTER CITY COUNCIL AND TENDRING DISTRICT COUNCIL)

Application Document 2.16

SITE MAP



- Legend**
- Local authority boundary
 - Section boundary & local authority boundary
 - Section boundary
 - Sheet index
 - Order Limits

Notes

1. These plans are indicative and the Project will all within the Order Limits. Due to the need for future flexibility, National Grid will be applying for Order Limits and Limits of Deviation within its DCO, within which any final alignment would lie.

2. For additional detail on the plan suites, please refer to the Guide to Plans (document reference 2.0), located in the Volume 2 of the DCO application.

3. This drawing is scaled at paper size A0, therefore any prints taken at smaller sizes will affect accuracy of the measurement units and should not be scaled against.

Coordinate System: British National Grid
Sheet X Centroid Coordinate: 594955 Sheet Y Centroid Coordinate: 227102

0 250 500 1,000 1,500 Metres

BACKGROUND MAPPING INFORMATION HAS BEEN REPRODUCED FROM THE ORDNANCE SURVEY BY PERMISSION OF ORDNANCE SURVEY OF THE CONTROLLER OF HIS MAJESTY'S STATIONERY OFFICE. © CROWN COPYRIGHT AND DATABASE RIGHTS (2025) LICENCE OS100024241 AND AC0000807948.

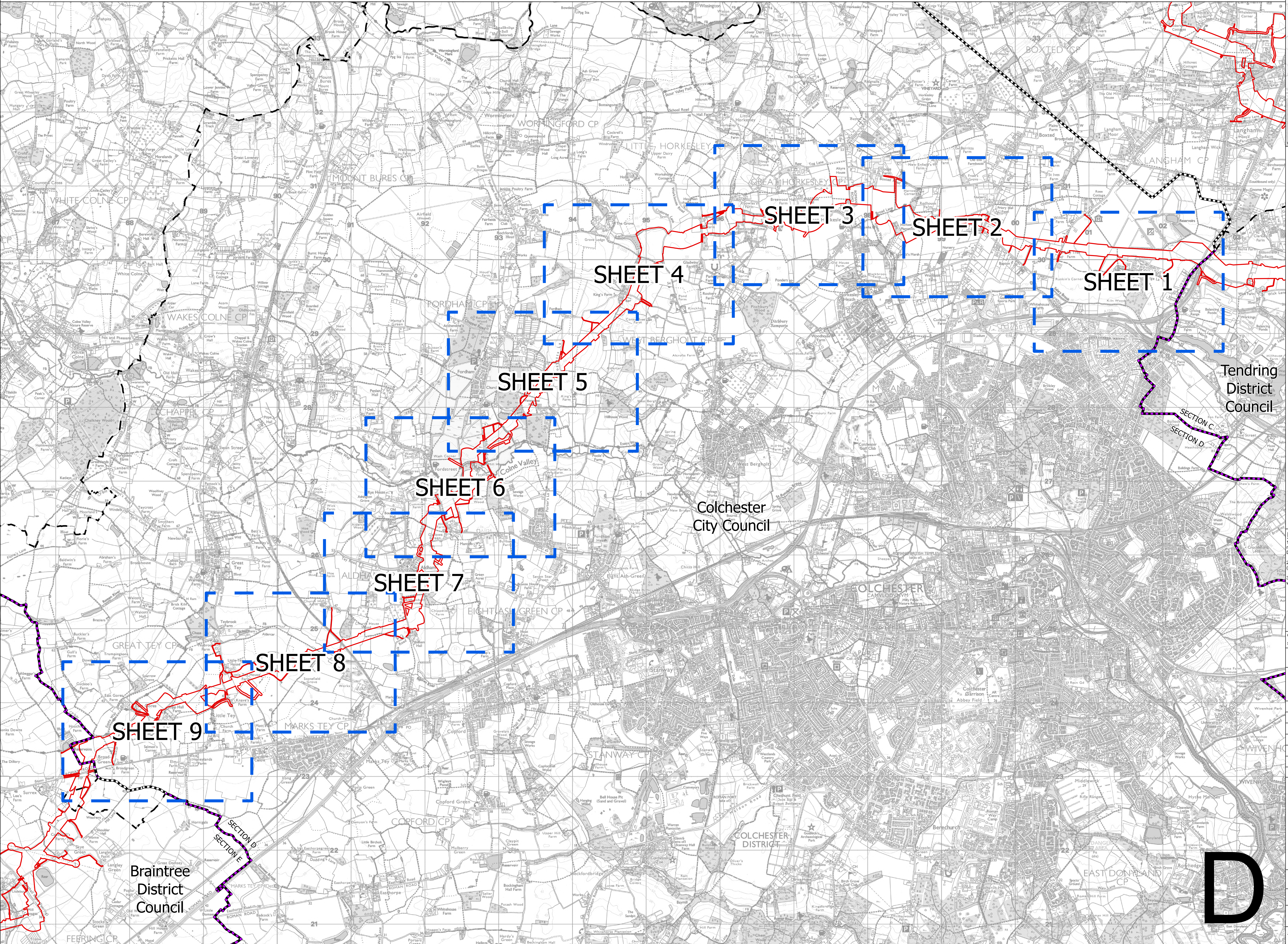
A	AUG-2025	For DCO submission	EOS	JPC	KR
Issue	Date	Remarks	Drawn	Checked	Approved

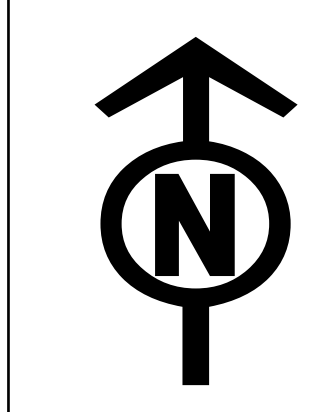
Title THE NATIONAL GRID (NORWICH TO TILBURY) ORDER TREES AND HEDGEROWS TO BE REMOVED AND OR MANAGED PLANS REGULATION 5(2)(o) SECTION D (SHEET 1 OF 1, BRAINTREE DISTRICT COUNCIL, COLCHESTER CITY COUNCIL AND TENDRING DISTRICT COUNCIL)

nationalgrid
PINS Application Number EN020027

National Grid Drawing Reference
AENC-LSTC-ENG-DWG-0002

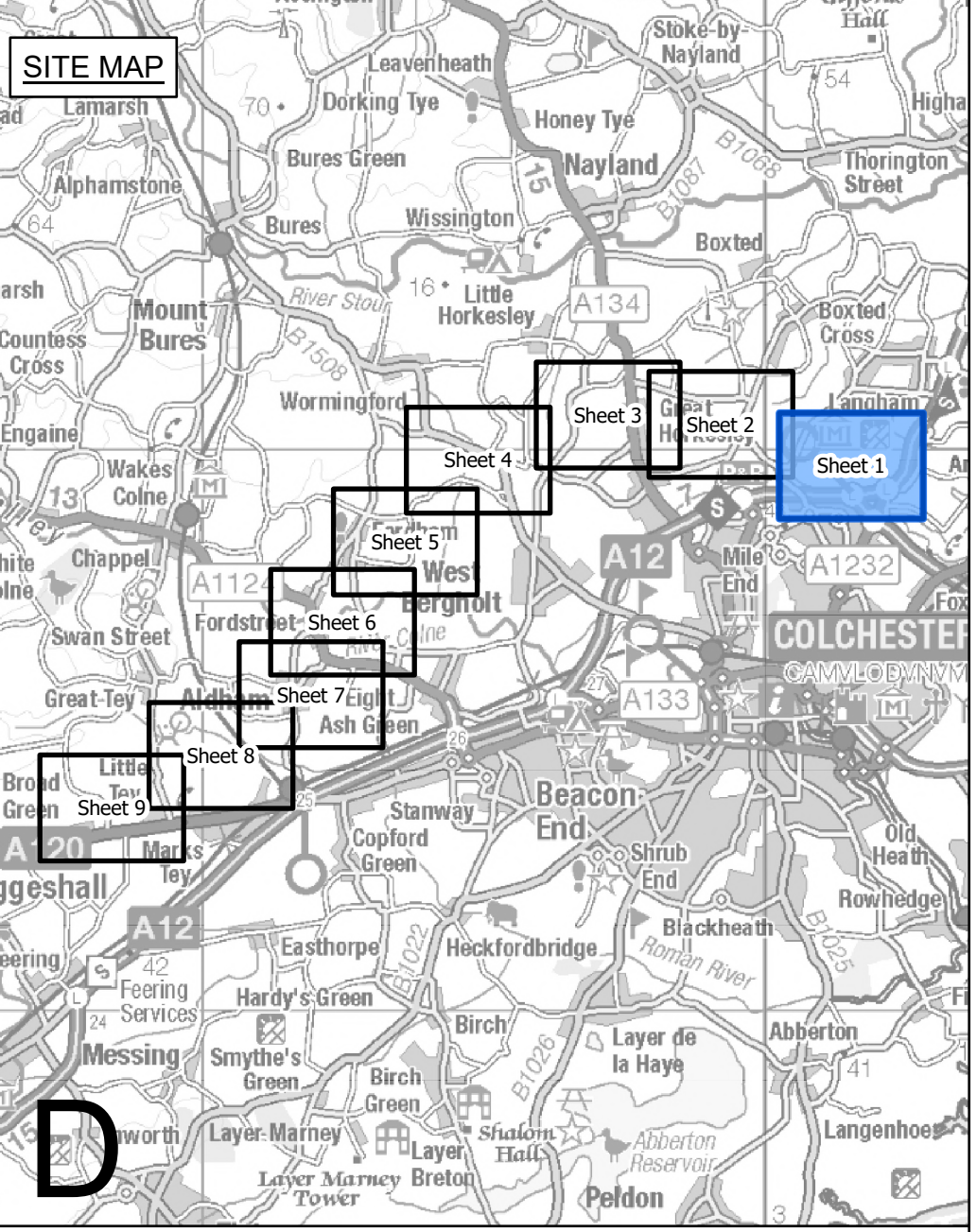
Scale	Sheet Size	Sheet	Issue
1:17,000	A0	SHEET 1 OF 1	A





THE NATIONAL GRID (NORWICH TO TILBURY) ORDER
TREES AND HEDGEROWS TO BE REMOVED AND OR MANAGED PLANS
REGULATION 5(2)(o)
SECTION D (SHEET 1 OF 9,
COLCHESTER CITY COUNCIL AND TENDRING DISTRICT COUNCIL)

Application Document 2.16



Legend

- Local authority boundary
- Section boundary & local authority boundary
- Section boundary
- Sheet index cutlines
- Order Limits
- Individual Tree Preservation Order
- Ancient woodland (Natural England)
- Project defined ancient woodland
- Veteran tree group
- Important hedgerows

Veteran tree

- Removed
- Affected managed
- Potentially affected
- Unaffected

Tree

- Removed
- Affected managed
- Potentially affected
- Unaffected

Tree groups

- Removed
- Affected managed
- Potentially affected
- Unaffected

Hedgerows

- Removed
- Affected managed
- Potentially affected
- Unaffected

Notes

- These plans are indicative and the Project will sit within the Order Limits. Due to the need for future flexibility, National Grid will be applying for Order Limits and Limits of Deviation within its DCO, within which any final alignment would lie.
- For additional detail on the plan suites, please refer to the Guide to Plans (document reference 2.0), located in the Volume 2 of the DCO application.
- This drawing is scaled at paper size A0, therefore any prints taken at smaller sizes will affect accuracy of the measurement units and should not be scaled against.
- Spatial locations and details of Tree Preservation Orders have been provided by relevant Local Planning Authorities and their projected spatial locations may differ slightly to those recorded during the arboricultural survey undertaken by the Project. For the avoidance of doubt, references to any tree subject to a Tree Preservation Order on these plans include any such slight differences.
- The Tree Preservation Order data illustrated on the plans is limited to the arboriculture study area (which applies a 30 m buffer from the outer edge of the Order Limits).
- Reference to any tree, shrub, shrubbery, hedgerow, or important hedgerow being removed, affected managed, potentially affected or unaffected is without prejudice to the exercise of any power in relation to such tree, shrub, shrubbery, hedgerow, or important hedgerow on the terms of the DCO.
- The numbered references to trees comprised in any Individual Tree Preservation Order shown on these plans include any tree to which the relevant line points as well as any tree overlapping any such tree, whether or not a line points to it or not.
- For the avoidance of doubt, where the section and/or local authority boundary and/or Order Limits shown on these plans overlap any tree, hedgerow or ancient woodland shown on these plans such that they are partially obscured these plans are to be interpreted as if the tree, hedgerow or ancient woodland in question is not so obscured.

Coordinate System: British National Grid
Sheet X Centroid Coordinate: 801537 Sheet Y Centroid Coordinate: 229702

0 50 100 150 200 250 Metres

BACKGROUND MAPPING INFORMATION HAS BEEN REPRODUCED FROM THE ORDNANCE SURVEY BY PERMISSION OF ORDNANCE SURVEY OF THE CONTROLLER OF HIS MAJESTY'S STATIONERY OFFICE. © CROWN COPYRIGHT AND DATABASE RIGHTS (2025) LICENCE OS100024241 AND AC0000807948.

Issue	Date	Remarks	Drawn	Checked	Approved
A	AUG-2025	For DCO submission	EOS	JPC	KR

Title

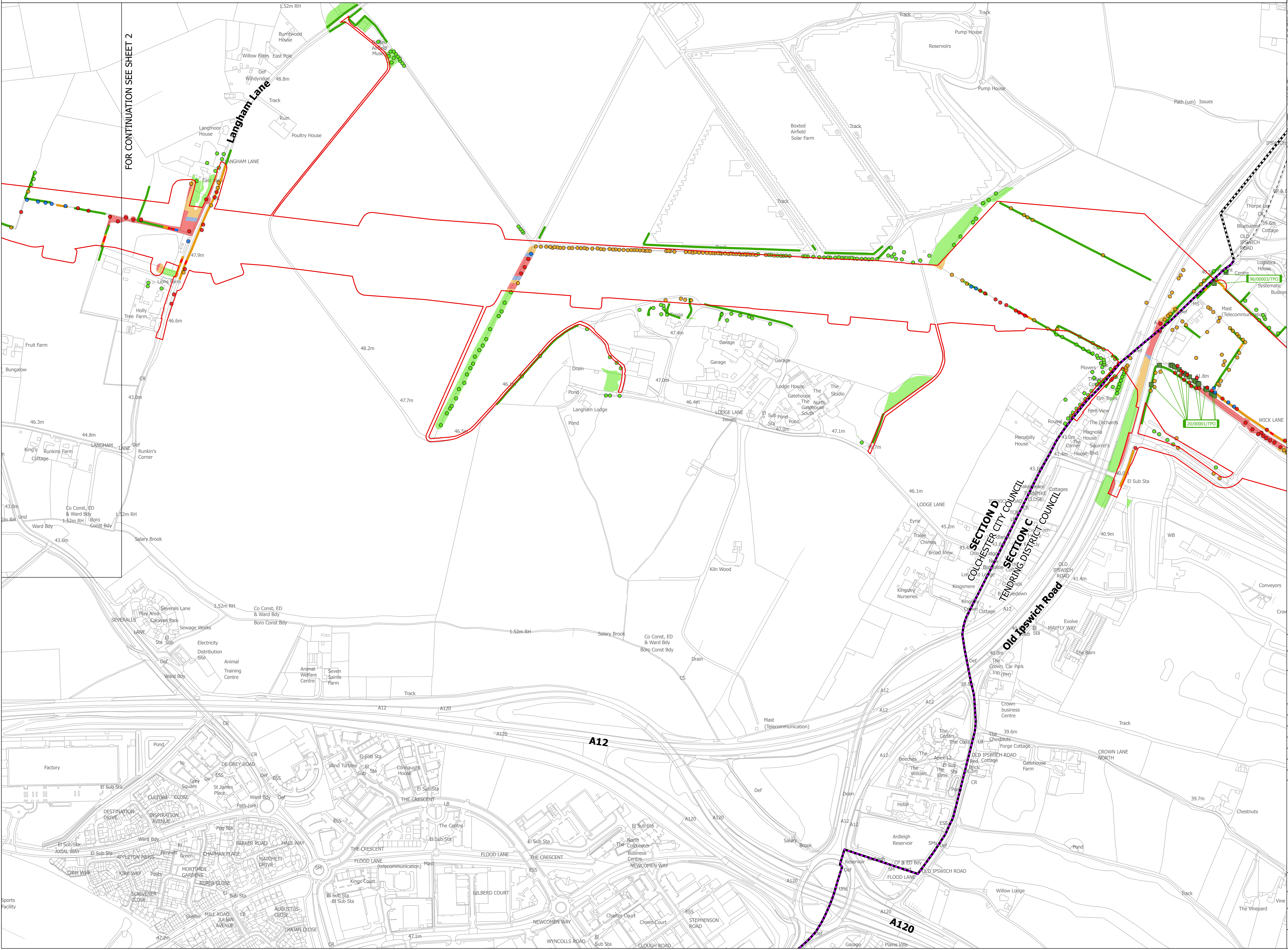
THE NATIONAL GRID
(NORWICH TO TILBURY) ORDER
TREES AND HEDGEROWS TO BE REMOVED
AND OR MANAGED PLANS
REGULATION 5(2)(o)
SECTION D (SHEET 1 OF 9,
COLCHESTER CITY COUNCIL AND
TENDRING DISTRICT COUNCIL)

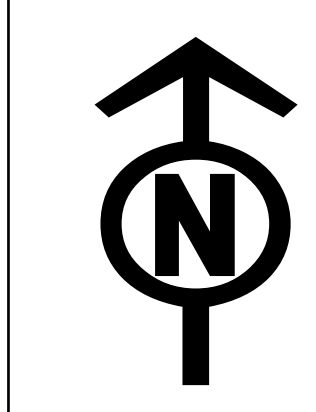
nationalgrid

PINS Application Number: EN020027

National Grid Drawing Reference: AENC-LSTC-ENG-DWG-0002

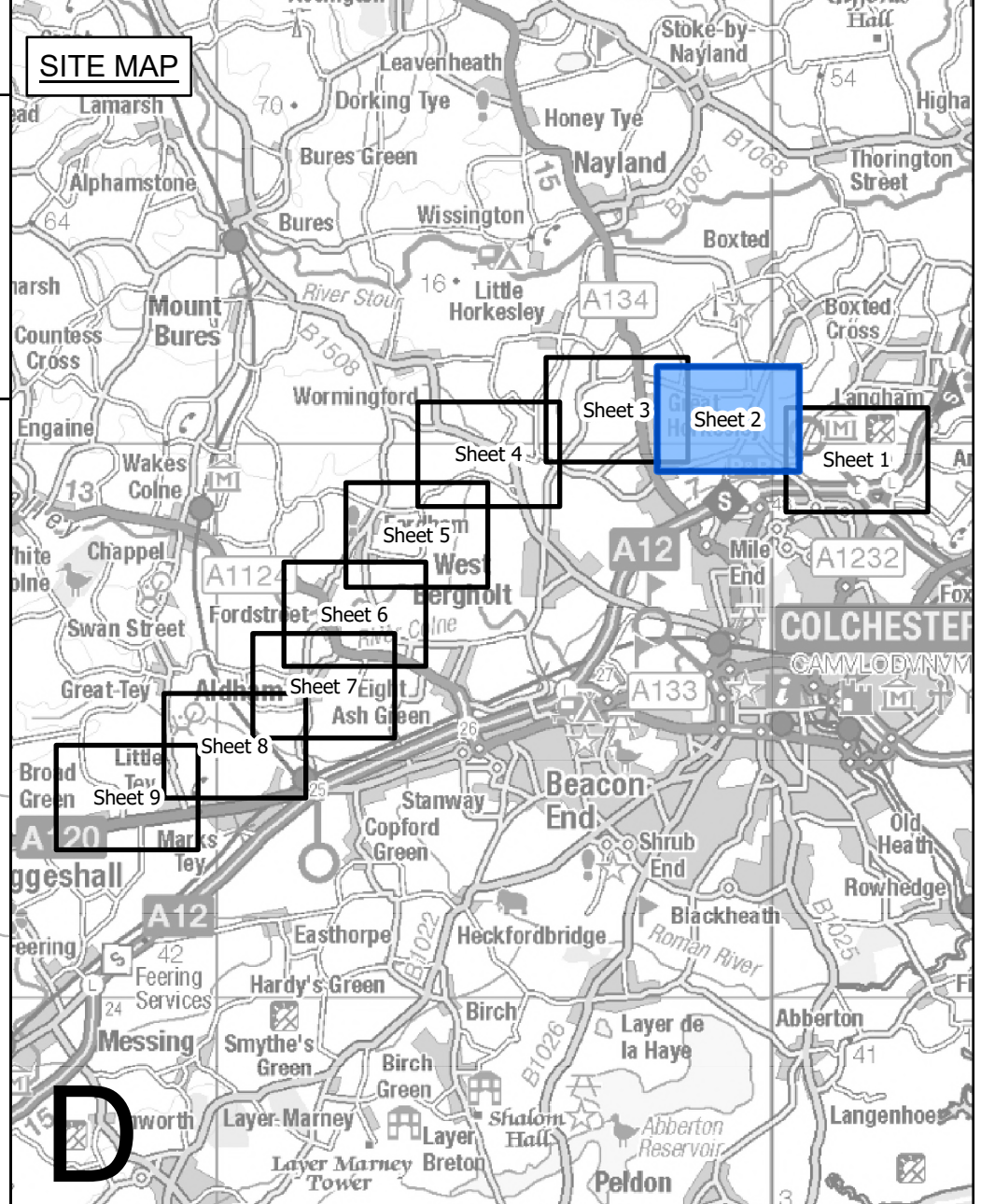
Scale	Sheet Size	Sheet	Issue
1:2,500	A0	SHEET 1 OF 9	A





THE NATIONAL GRID (NORWICH TO TILBURY) ORDER
TREES AND HEDGEROWS TO BE REMOVED AND OR MANAGED PLANS
REGULATION 5(2)(o)
SECTION D (SHEET 2 OF 9,
COLCHESTER CITY COUNCIL)

Application Document 2.16



Legend

- Local authority boundary
- Section boundary & local authority boundary
- Section boundary
- Sheet index cutlines
- Order Limits
- Individual Tree Preservation Order
- Ancient woodland (Natural England)
- Project defined ancient woodland
- Veteran tree group
- Important hedgerows

Veteran tree

- Removed
- Affected managed
- Potentially affected
- Unaffected

Tree

- Removed
- Affected managed
- Potentially affected
- Unaffected

Tree groups

- Removed
- Affected managed
- Potentially affected
- Unaffected

Hedgerows

- Removed
- Affected managed
- Potentially affected
- Unaffected

- Notes**
- These plans are indicative and the Project will sit within the Order Limits. Due to the need for future flexibility, National Grid will be applying for Order Limits and Limits of Deviation within its DCO, within which any final alignment would lie.
 - For additional detail on the plan suites, please refer to the Guide to Plans (document reference 2.0), located in the Volume 2 of the DCO application.
 - This drawing is scaled at paper size A0, therefore any prints taken at smaller sizes will affect accuracy of the measurement units and should not be scaled against.
 - Spatial locations and details of Tree Preservation Orders have been provided by relevant Local Planning Authorities and their projected spatial locations may differ slightly to those recorded during the arboricultural survey undertaken by the Project. For the avoidance of doubt, references to any tree subject to a Tree Preservation Order on these plans include any such slight differences.
 - The Tree Preservation Order data illustrated on the plans is limited to the arboriculture study area (which applies a 30 m buffer from the outer edge of the Order Limits).
 - Reference to any tree, shrub, shrubbery, hedgerow, or important hedgerow being removed, affected managed, potentially affected or unaffected is without prejudice to the exercise of any power in relation to such tree, shrub, shrubbery, hedgerow, or important hedgerow on the terms of the DCO.
 - The numbered references to trees comprised in any Individual Tree Preservation Order shown on these plans include any tree to which the relevant line points as well as any tree overlapping any such tree, whether or not a line points to it or not.
 - For the avoidance of doubt, where the section and/or local authority boundary and/or Order Limits shown on these plans overlap any tree, hedgerow or ancient woodland shown on these plans such that they are partially obscured these plans are to be interpreted as if the tree, hedgerow or ancient woodland in question is not so obscured.

Coordinate System: British National Grid
Sheet X Centroid Coordinate: 599216 Sheet Y Centroid Coordinate: 230441

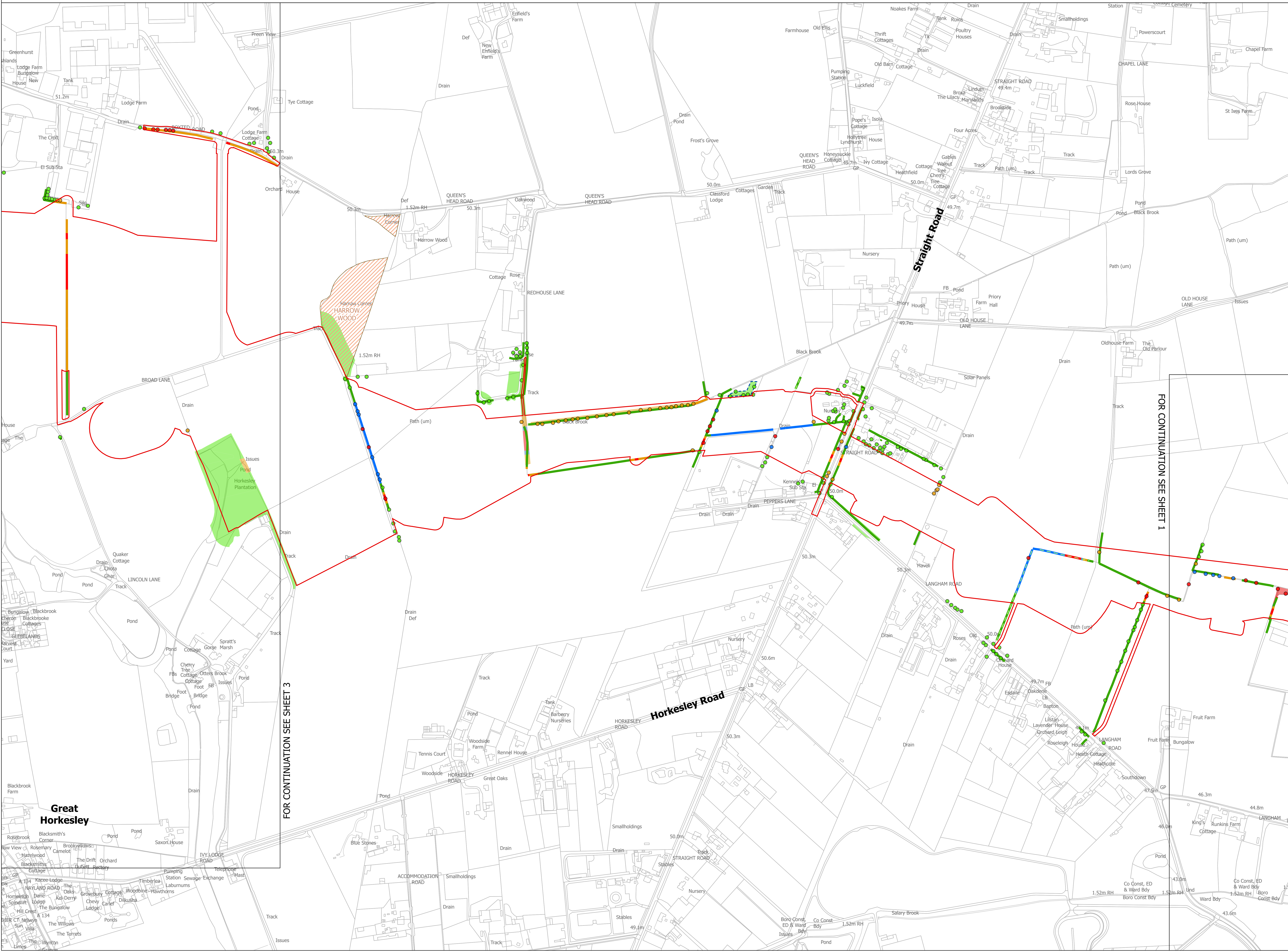
BACKGROUND MAPPING INFORMATION HAS BEEN REPRODUCED FROM THE ORDNANCE SURVEY BY PERMISSION OF ORDNANCE SURVEY OF THE CONTROLLER OF HIS MAJESTY'S STATIONERY OFFICE. © CROWN COPYRIGHT AND DATABASE RIGHTS (2025) LICENCE OS100024241 AND AC0000807948.

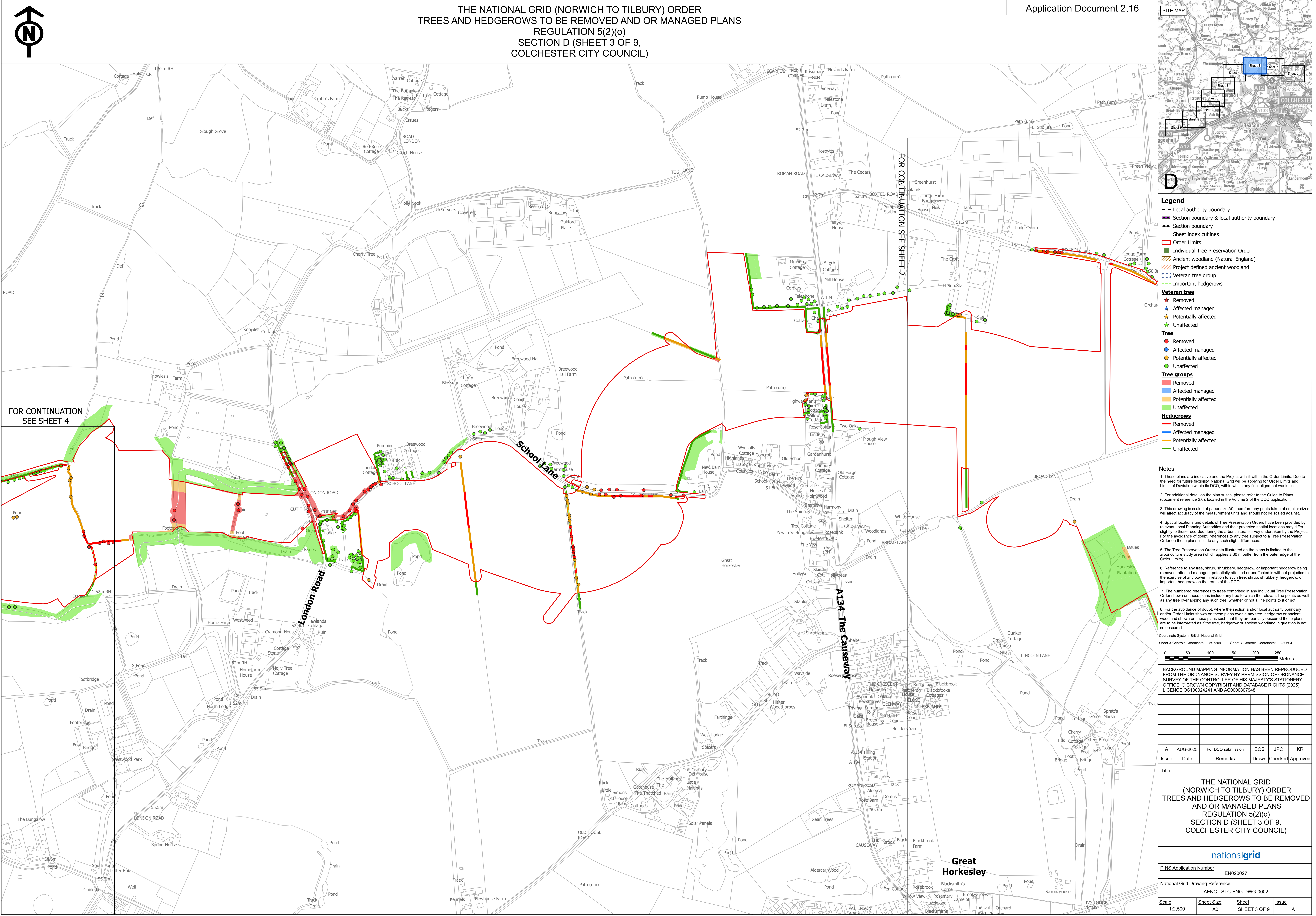
A	AUG-2025	For DCO submission	EOS	JPC	KR
Issue	Date	Remarks	Drawn	Checked	Approved

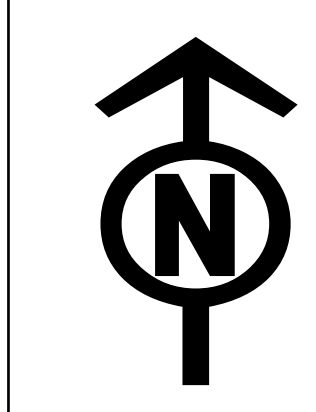
Title

THE NATIONAL GRID
(NORWICH TO TILBURY) ORDER
TREES AND HEDGEROWS TO BE REMOVED
AND OR MANAGED PLANS
REGULATION 5(2)(o)
SECTION D (SHEET 2 OF 9,
COLCHESTER CITY COUNCIL)

nationalgrid			
PINS Application Number		EN020027	
National Grid Drawing Reference			
AENC-LSTC-ENG-DWG-0002			
Scale	Sheet Size	Sheet	Issue
1:2,500	A0	SHEET 2 OF 9	A

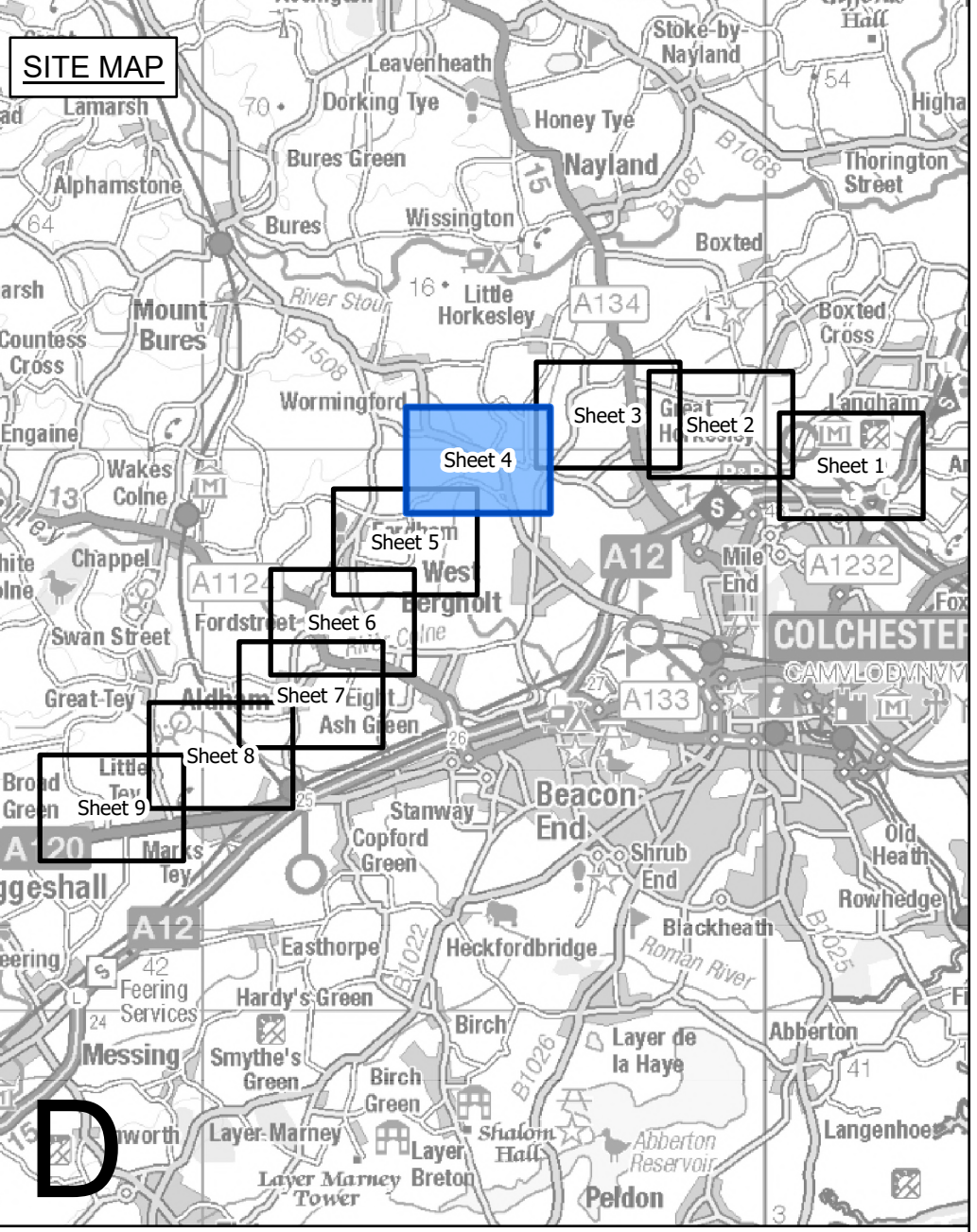






THE NATIONAL GRID (NORWICH TO TILBURY) ORDER
TREES AND HEDGEROWS TO BE REMOVED AND OR MANAGED PLANS
REGULATION 5(2)(o)
SECTION D (SHEET 4 OF 9,
COLCHESTER CITY COUNCIL)

Application Document 2.16



Legend

- Local authority boundary
- Section boundary & local authority boundary
- Section boundary
- Sheet index cutlines
- Order Limits
- Individual Tree Preservation Order
- Ancient woodland (Natural England)
- Project defined ancient woodland
- Veteran tree group
- Important hedgerows

Veteran tree

- Removed
- Affected managed
- Potentially affected
- Unaffected

Tree

- Removed
- Affected managed
- Potentially affected
- Unaffected

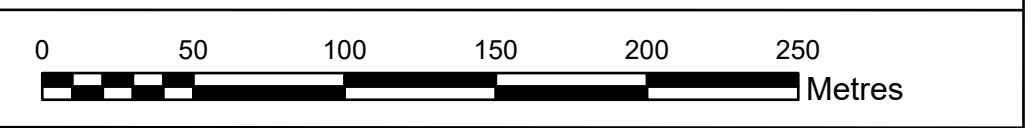
Tree groups

- Removed
- Affected managed
- Potentially affected
- Unaffected

Hedgerows

- Removed
- Affected managed
- Potentially affected
- Unaffected

- Notes**
- These plans are indicative and the Project will sit within the Order Limits. Due to the need for future flexibility, National Grid will be applying for Order Limits and Limits of Deviation within its DCO, within which any final alignment would lie.
 - For additional detail on the plan suites, please refer to the Guide to Plans (document reference 2.0), located in the Volume 2 of the DCO application.
 - This drawing is scaled at paper size A0, therefore any prints taken at smaller sizes will affect accuracy of the measurement units and should not be scaled against.
 - Spatial locations and details of Tree Preservation Orders have been provided by relevant Local Planning Authorities and their projected spatial locations may differ slightly to those recorded during the arboricultural survey undertaken by the Project. For the avoidance of doubt, references to any tree subject to a Tree Preservation Order on these plans include any such slight differences.
 - The Tree Preservation Order data illustrated on the plans is limited to the arboriculture study area (which applies a 30 m buffer from the outer edge of the Order Limits).
 - Reference to any tree, shrub, shrubbery, hedgerow, or important hedgerow being removed, affected managed, potentially affected or unaffected is without prejudice to the exercise of any power in relation to such tree, shrub, shrubbery, hedgerow, or important hedgerow on the terms of the DCO.
 - The numbered references to trees comprised in any Individual Tree Preservation Order shown on these plans include any tree to which the relevant line points as well as any tree overlapping any such tree, whether or not a line points to it or not.
 - For the avoidance of doubt, where the section and/or local authority boundary and/or Order Limits shown on these plans overlap any tree, hedgerow or ancient woodland shown on these plans such that they are partially obscured these plans are to be interpreted as if the tree, hedgerow or ancient woodland in question is not so obscured.



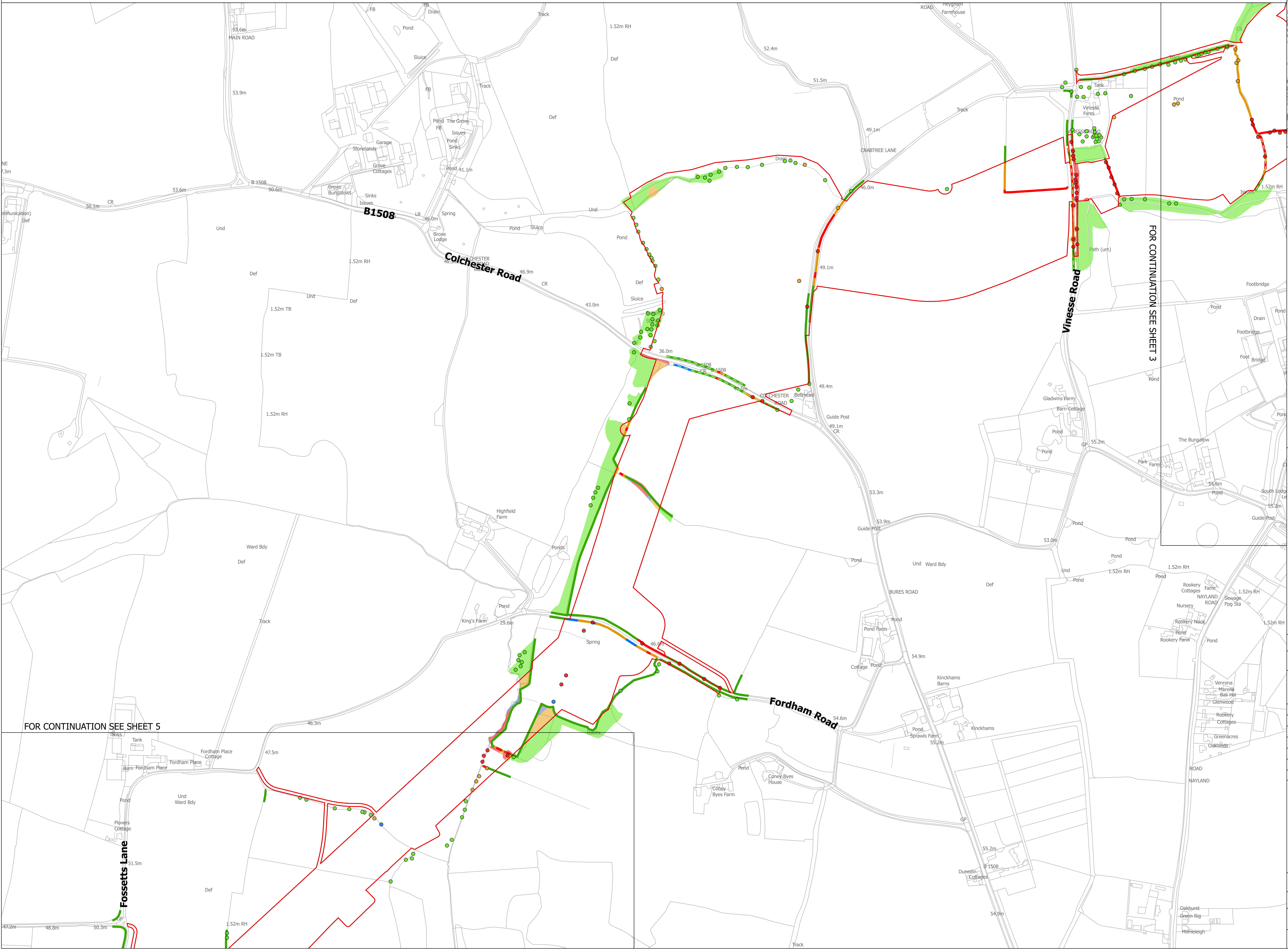
BACKGROUND MAPPING INFORMATION HAS BEEN REPRODUCED FROM THE ORDNANCE SURVEY BY PERMISSION OF ORDNANCE SURVEY OF THE CONTROLLER OF HIS MAJESTY'S STATIONERY OFFICE. © CROWN COPYRIGHT AND DATABASE RIGHTS (2025) LICENCE OS100024241 AND AC0000807948.

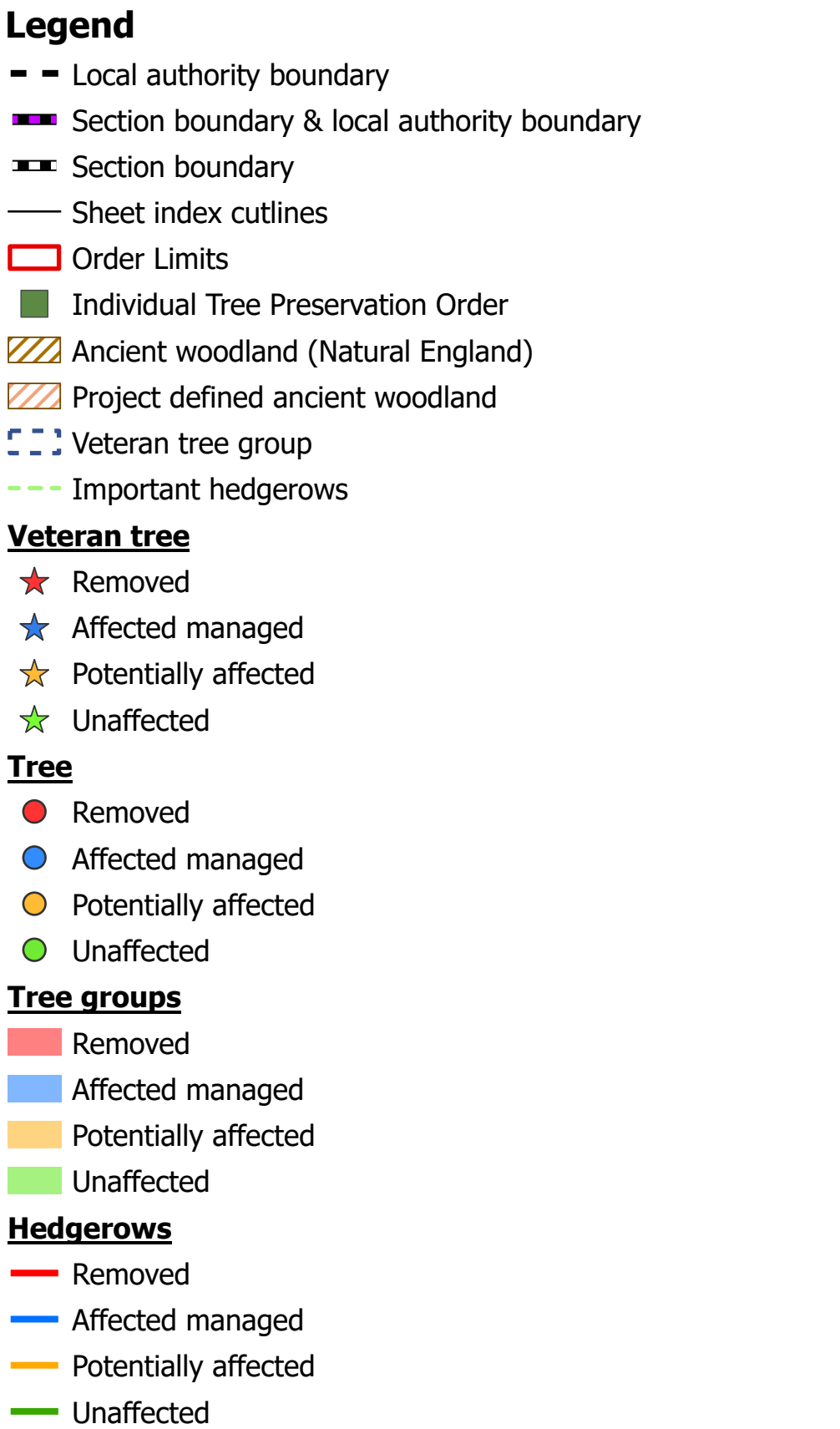
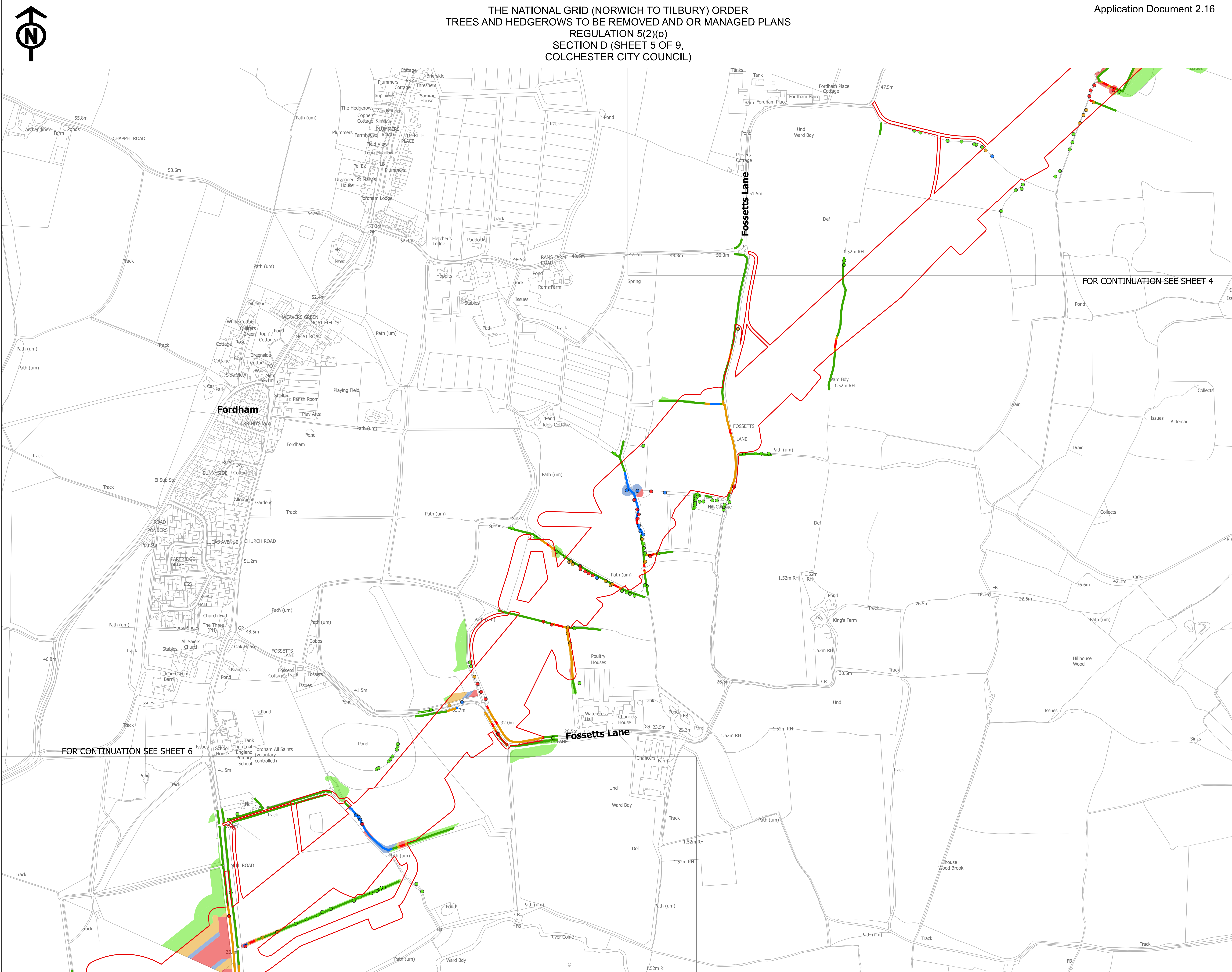
A	AUG-2025	For DCO submission	EOS	JPC	KR
Issue	Date	Remarks	Drawn	Checked	Approved

Title

THE NATIONAL GRID
(NORWICH TO TILBURY) ORDER
TREES AND HEDGEROWS TO BE REMOVED
AND OR MANAGED PLANS
REGULATION 5(2)(o)
SECTION D (SHEET 4 OF 9,
COLCHESTER CITY COUNCIL)

<div><div></div><div>nationalgrid</div></div>			
<u>PINS Application Number</u>		EN020027	
<u>National Grid Drawing Reference</u>			
AENC-LSTC-ENG-DWG-0002			
<u>Scale</u>	<u>Sheet Size</u>	<u>Sheet</u>	<u>Issue</u>
1:2,500	A0	SHEET 4 OF 9	A





FOR CONTINUATION SEE SHEET 4

FOR CONTINUATION SEE SHEET 6

Notes

1. These plans are indicative and the Project will sit within the Order Limits. Due to the need for future flexibility, National Grid will be applying for Order Limits and the DCO will be required to amend the DCO to reflect the Order Limits.

2. For additional detail on the plan sheets, please refer to the Guide to Plans (document referenced is scaled), located in the Volume 2 of the DCO application.

3. This drawing is intended at paper size A0, where the majority of prints taken at smaller sizes will affect accuracy of the measurements and should not be scaled against.

4. Spatial locations and details of Tree Preservation Orders have been provided by relevant Local Planning Authorities and their projected spatial locations may differ from the actual locations. National Grid will be applying for the Order Limits by the Project. For the avoidance of doubt, references to any tree subject to a Tree Preservation Order on these plans include any such slight differences.

5. The Tree Preservation Order data illustrated on the plans is undertaken by the Arboricultural Survey team (which applies a 30m buffer to the outer edge of the Order Limits).

6. Reference to any tree, shrub, shrubbery, hedgerow or important hedgerow being removed, affected managed, potentially affected or unaffected is without prejudice to the fact that the tree, shrub, shrubbery, hedgerow or important hedgerow may be removed, affected managed on the terms of the DCO.

7. The numbered references to trees comprised in any Individual Tree Preservation Order shown on these plans include any tree to which the relevant line points as well as any tree overtopping any tree, whether or not a line points to it or not.

8. For the avoidance of doubt, the section and/or local authority boundary shown on these plans should not be interpreted as a tree, hedgerow or ancient woodland shown on these plans such that they are partially obscured in question is not to be interpreted as the tree, hedgerow or ancient woodland in question is not

Coordinate System: British National Grid
Sheet X Centroid Coordinate: 593599 Sheet Y Centroid Coordinate: 228348

0 50 100 150 200 250
Metres

BACKGROUND MAPPING INFORMATION HAS BEEN REPRODUCED FROM THE ORDNANCE SURVEY BY PERMISSION OF ORDNANCE SURVEY OF THE CONTROLLER OF HIS MAJESTY'S STATIONERY OFFICE. © CROWN COPYRIGHT AND DATABASE RIGHTS (2025) LICENCE OS100024241 AND AC0000807948.

A	AUG-2025	For DCO submission	EOS	JPC	KR
Issue	Date	Remarks	Drawn	Checked	Approved

Title

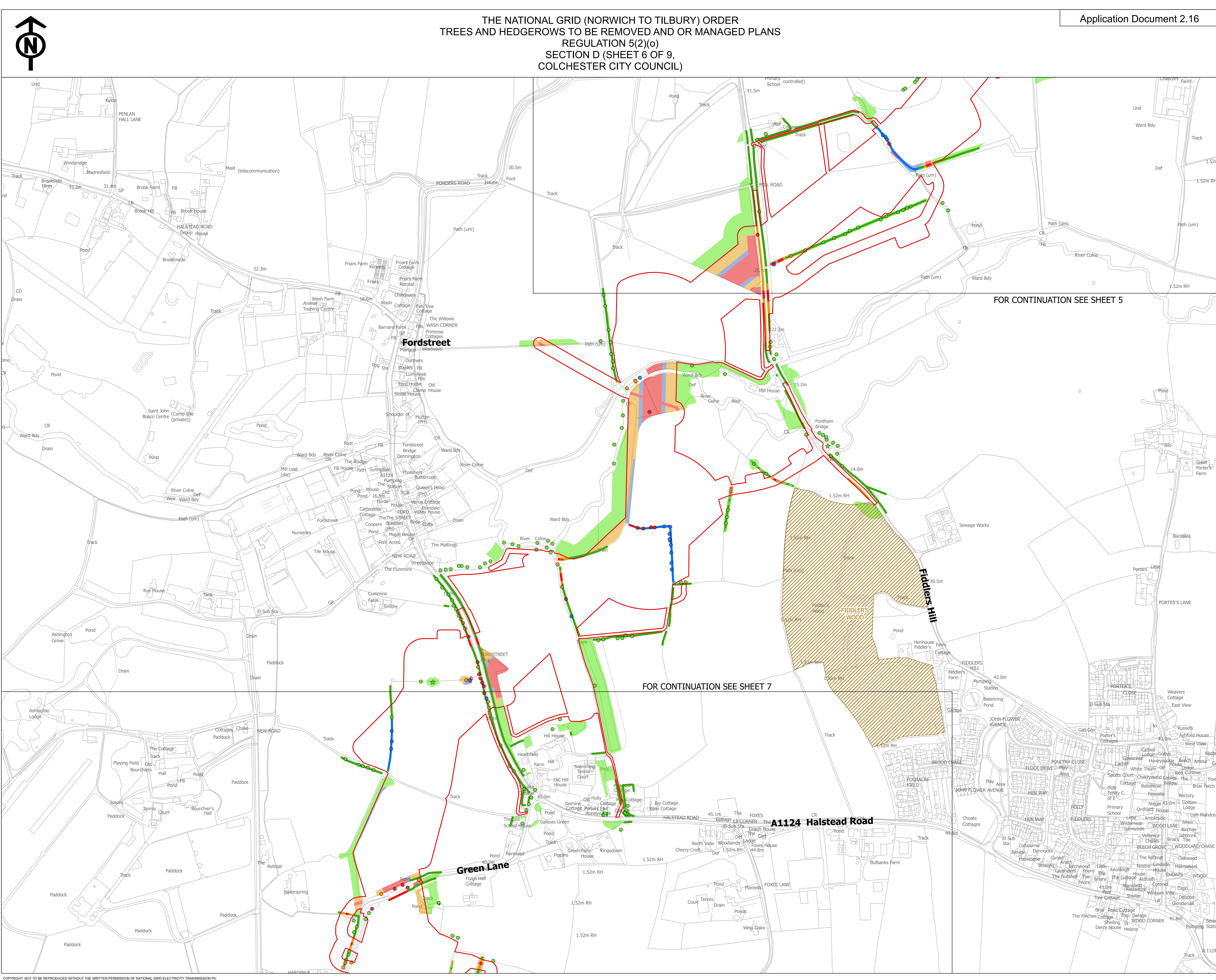
THE NATIONAL GRID
(NORWICH TO TILBURY) ORDER
TREES AND HEDGEROWS TO BE REMOVED
AND OR MANAGED PLANS
REGULATION 5(2)(o)
SECTION D (SHEET 5 OF 9,
COLCHESTER CITY COUNCIL)

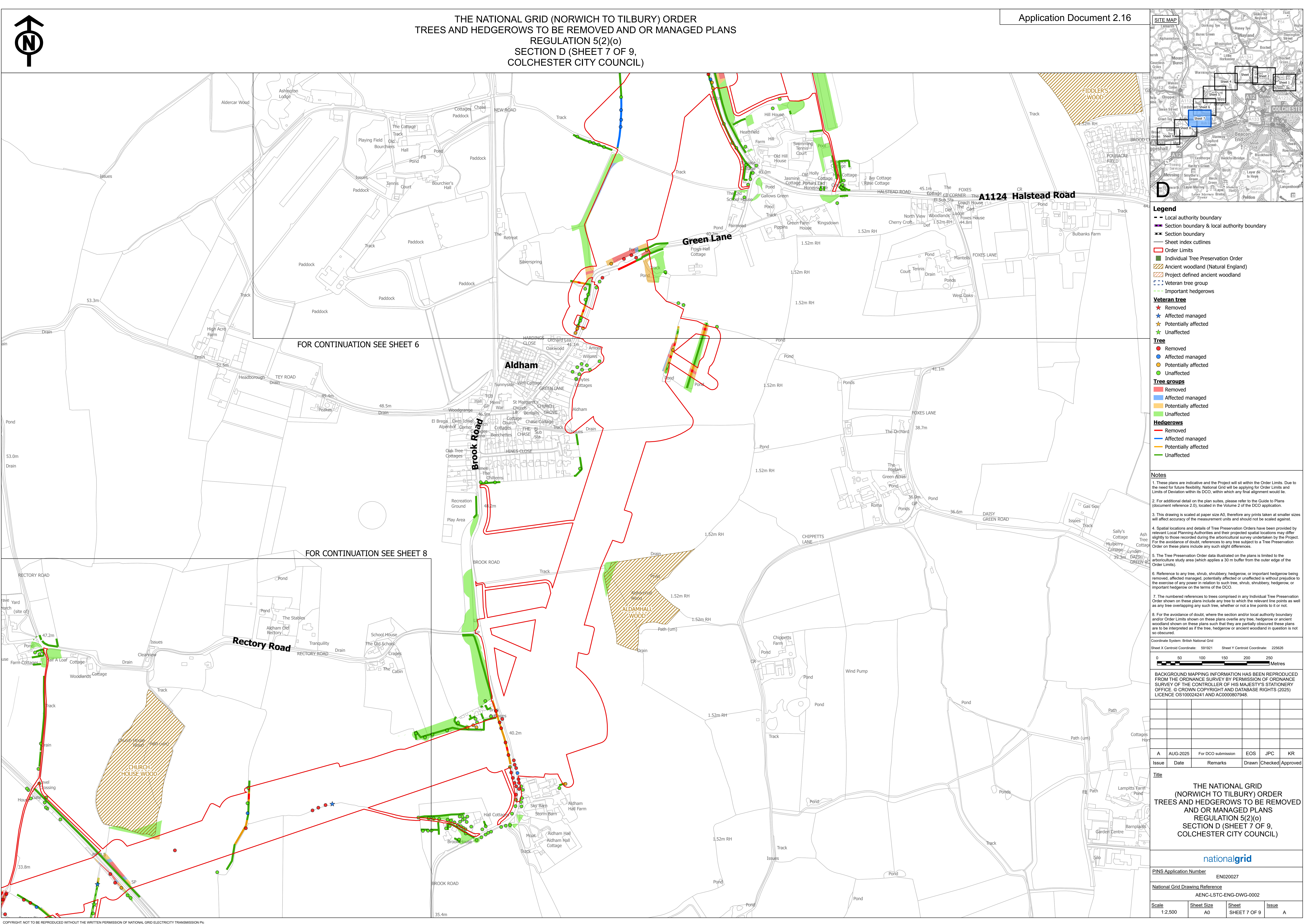
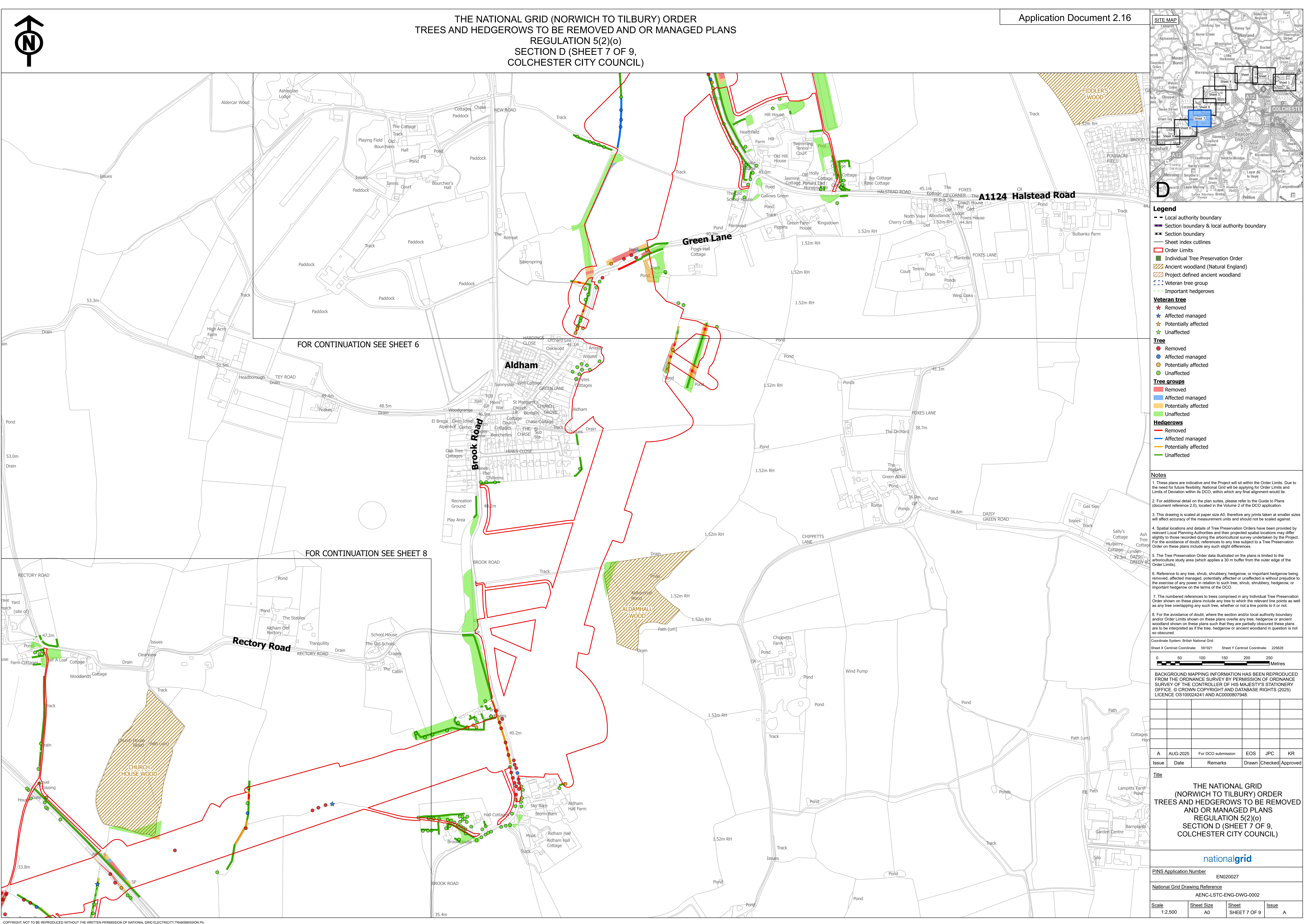
nationalgrid

PINS Application Number
EN020027

National Grid Drawing Reference

Scale	Sheet Size	Sheet	Issue
-------	------------	-------	-------





- THE NATIONAL GRID (NORWICH TO TILBURY) ORDER
TREES AND HEDGEROWS TO BE REMOVED AND OR MANAGED PLANS
REGULATION 5(2)(o)
SECTION D (SHEET 7 OF 9,
COLCHESTER CITY COUNCIL)**

Application Document 2.16

SITE MAP

D

Legend

 - Local authority boundary
 - Section boundary & local authority boundary
 - Section boundary
 - Sheet index cutlines
 - Order Limits
 - Individual Tree Preservation Order
 - Ancient woodland (Natural England)
 - Project defined ancient woodland
 - Veteran tree group
 - Important hedgerows

Veteran tree

 - Removed
 - Affected managed
 - Potentially affected
 - Unaffected

Tree

 - Removed
 - Affected managed
 - Potentially affected
 - Unaffected

Tree groups

 - Removed
 - Affected managed
 - Potentially affected
 - Unaffected

Hedgerows

 - Removed
 - Affected managed
 - Potentially affected
 - Unaffected

Notes

 - These plans are indicative and the Project will sit within the Order Limits. Due to the need for future flexibility, National Grid will be applying for Order Limits and Limits of Deviation within its DCO, within which any final alignment would lie.
 - For additional detail on the plan suites, please refer to the Guide to Plans (document reference 2.0), located in the Volume 2 of the DCO application.
 - This drawing is scaled at paper size A0, therefore any prints taken at smaller sizes will affect accuracy of the measurement units and should not be scaled against.
 - Spatial locations and details of Tree Preservation Orders have been provided by relevant Local Planning Authorities and their projected spatial locations may differ slightly to those recorded during the arboricultural survey undertaken by the Project. For the avoidance of doubt, references to any tree subject to a Tree Preservation Order on these plans include any such slight differences.
 - The Tree Preservation Order data illustrated on the plans is limited to the arboriculture study area (which applies a 30 m buffer from the outer edge of the Order Limits).
 - Reference to any tree, shrub, shrubby, or important hedgerow being removed, affected managed, potentially affected or unaffected is without prejudice to the exercise of any power in relation to such tree, shrub, shrubby, hedgerow, or important hedgerow on the terms of the DCO.
 - The numbered references to trees comprised in any Individual Tree Preservation Order shown on these plans include any tree to which the relevant line points as well as any tree overlapping any such tree, whether or not a line points to it or not.
 - For the avoidance of doubt, where the section and/or local authority boundary and/or Order Limits shown on these plans overlap any tree, hedgerow or ancient woodland shown on these plans such that they are partially obscured these plans are to be interpreted as if the tree, hedgerow or ancient woodland in question is not so obscured.

Coordinate System: British National Grid
Sheet X Centroid Coordinate: 591921 Sheet Y Centroid Coordinate: 225628

0 50 100 150 200 250 Metres

BACKGROUND MAPPING INFORMATION HAS BEEN REPRODUCED FROM THE ORDNANCE SURVEY BY PERMISSION OF ORDNANCE SURVEY OF THE CONTROLLER OF HIS MAJESTY'S STATIONERY OFFICE. © CROWN COPYRIGHT AND DATABASE RIGHTS (2025) LICENCE OS100024241 AND AC0000807948.

Issue	Date	Remarks	Drawn	Checked	Approved
A	AUG-2025	For DCO submission	JPC	KR	

Title

THE NATIONAL GRID
(NORWICH TO TILBURY) ORDER
TREES AND HEDGEROWS TO BE REMOVED
AND OR MANAGED PLANS
REGULATION 5(2)(o)
SECTION D (SHEET 7 OF 9,
COLCHESTER CITY COUNCIL)

nationalgrid

PINS Application Number EN020027

National Grid Drawing Reference AENC-LSTC-ENG-DWG-0002

Scale	Sheet Size	Sheet	Issue
1:2,500	A0	SHEET 7 OF 9	A

COPYRIGHT NOT TO BE REPRODUCED WITHOUT THE WRITTEN PERMISSION OF NATIONAL GRID ELECTRICITY TRANSMISSION PLC

- [illegible]

- THE NATIONAL GRID (NORWICH TO TILBURY) ORDER
TREES AND HEDGEROWS TO BE REMOVED AND OR MANAGED PLANS
REGULATION 5(2)(o)
SECTION D (SHEET 7 OF 9,
COLCHESTER CITY COUNCIL)

Application Document 2.16

SITE MAP

D

Legend

Veteran tree

Tree

Tree groups

Hedgerows

Notes

Coordinate System: British National Grid

Sheet X Centroid Coordinate: 591921

Sheet Y Centroid Coordinate: 225628

Background Mapping Information has been reproduced from the Ordnance Survey by permission of Ordnance Survey of the Controller of His Majesty's Stationery Office. © Crown Copyright and Database Rights (2025) Licence OS100024241 and AC000087948.

AUG-2025For DCO submissionEOSJPCKR

TitleTHE NATIONAL GRID (NORWICH TO TILBURY) ORDER TREES AND HEDGEROWS TO BE REMOVED AND OR MANAGED PLANS REGULATION 5(2)(o) SECTION D (SHEET 7 OF 9, COLCHESTER CITY COUNCIL)

nationalgrid

PINS Application NumberEN020027

National Grid Drawing ReferenceAENC-LSTC-ENG-DWG-0002

Scale1:2,500

Sheet SizeA0

SheetSHEET 7 OF 9

IssueA

FOR CONTINUATION SEE SHEET 6

FOR CONTINUATION SEE SHEET 8

COPYRIGHT: NOT TO BE REPRODUCED WITHOUT THE WRITTEN PERMISSION OF NATIONAL GRID ELECTRICITY TRANSMISSION PLC

- [illegible]

- [illegible]

THE NATIONAL GRID (NORWICH TO TILBURY) ORDER
TREES AND HEDGEROWS TO BE REMOVED AND OR MANAGED PLANS
REGULATION 5(2)(o)
SECTION D (SHEET 7 OF 9,
COLCHESTER CITY COUNCIL)

Application Document 2.16

SITE MAP

D

Legend

Veteran tree

Tree

Tree groups

Hedgerows

Notes

Coordinate System: British National Grid

Sheet X Centroid Coordinate: 591921

Sheet Y Centroid Coordinate: 225628

Background Mapping Information has been reproduced from the Ordnance Survey by permission of Ordnance Survey of the Controller of His Majesty's Stationery Office. © Crown Copyright and Database Rights (2025) Licence OS100024241 and AC000087948.

AUG-2025For DCO submissionEOSJPCKR

TitleTHE NATIONAL GRID (NORWICH TO TILBURY) ORDER TREES AND HEDGEROWS TO BE REMOVED AND OR MANAGED PLANS REGULATION 5(2)(o) SECTION D (SHEET 7 OF 9, COLCHESTER CITY COUNCIL)

PINS Application NumberEN020027

National Grid Drawing ReferenceAENC-LSTC-ENG-DWG-0002

Scale1:2,500

Sheet SizeA0

SheetSHEET 7 OF 9

IssueA

THE NATIONAL GRID (NORWICH TO TILBURY) ORDER
TREES AND HEDGEROWS TO BE REMOVED AND OR MANAGED PLANS
REGULATION 5(2)(o)
SECTION D (SHEET 7 OF 9,
COLCHESTER CITY COUNCIL)

Application Document 2.16

SITE MAP

D

Legend

Veteran tree

Tree

Tree groups

Hedgerows

Notes

Coordinate System: British National Grid

Sheet X Centroid Coordinate: 591921

Sheet Y Centroid Coordinate: 225628

Background Mapping Information Has Been Reproduced From The Ordnance Survey By Permission Of Ordnance Survey Office © Crown Copyright And Database Rights (2025) Licence OS100024241 AND AC000087948.

AUG-2025For DCO submissionEOSJPCKR

TitleTHE NATIONAL GRID (NORWICH TO TILBURY) ORDER TREES AND HEDGEROWS TO BE REMOVED AND OR MANAGED PLANS REGULATION 5(2)(o) SECTION D (SHEET 7 OF 9, COLCHESTER CITY COUNCIL)

nationalgrid

PINS Application NumberEN020027

National Grid Drawing ReferenceAENC-LSTC-ENG-DWG-0002

Scale1:2,500

Sheet SizeA0

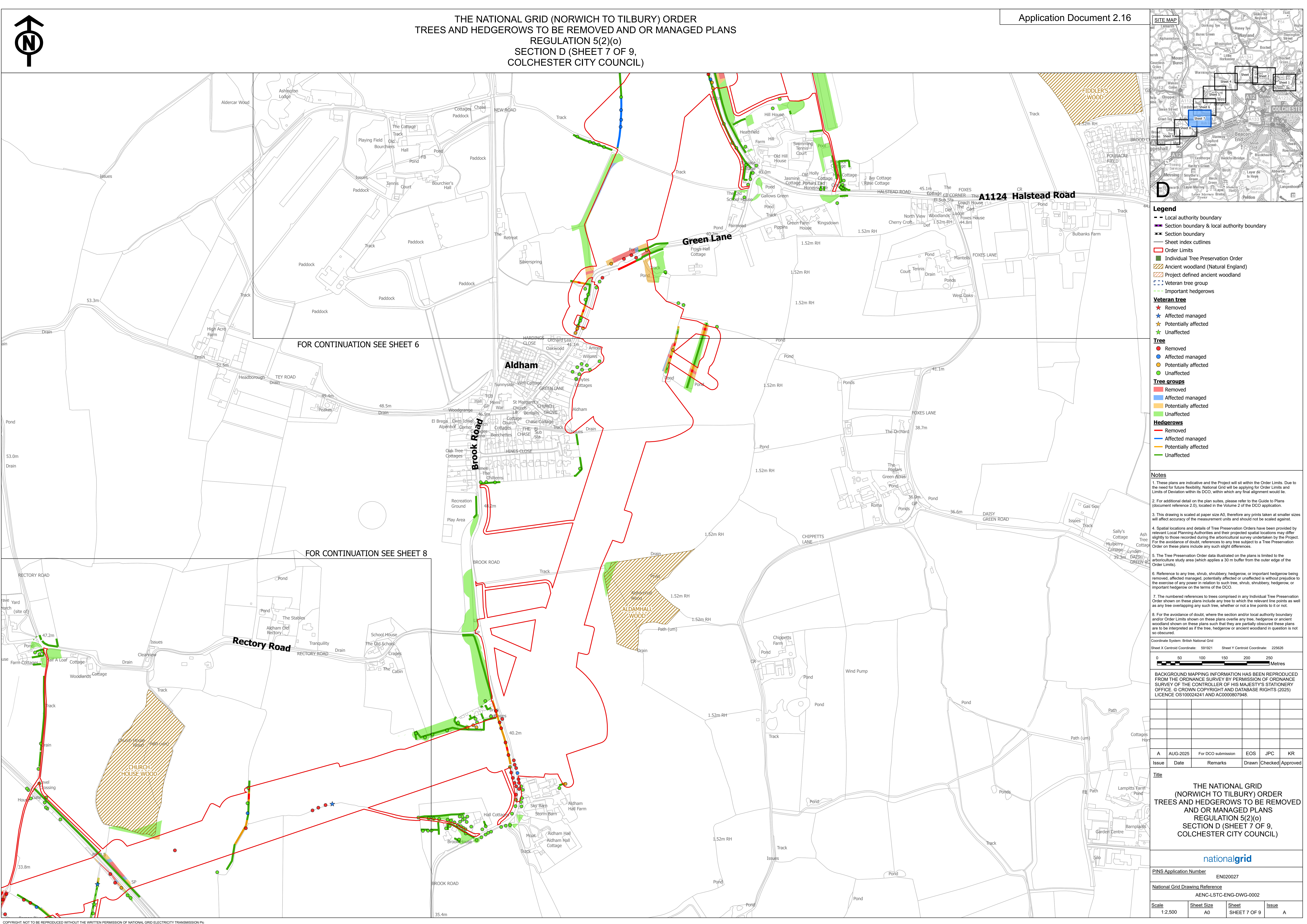
SheetSHEET 7 OF 9

IssueA

FOR CONTINUATION SEE SHEET 6

FOR CONTINUATION SEE SHEET 8

COPYRIGHT: NOT TO BE REPRODUCED WITHOUT THE WRITTEN PERMISSION OF NATIONAL GRID ELECTRICITY TRANSMISSION PLC

[illegible][illegible][illegible]

THE NATIONAL GRID (NORWICH TO TILBURY) ORDER
TREES AND HEDGEROWS TO BE REMOVED AND OR MANAGED PLANS
REGULATION 5(2)(o)
SECTION D (SHEET 7 OF 9,
COLCHESTER CITY COUNCIL)

Application Document 2.16

SITE MAP

D

Legend

Veteran tree

Tree

Tree groups

Hedgerows

Notes

Coordinate System: British National Grid

Sheet X Centroid Coordinate: 591921

Sheet Y Centroid Coordinate: 225628

Background Mapping Information has been reproduced from the Ordnance Survey by permission of Ordnance Survey of the Controller of His Majesty's Stationery Office. © Crown Copyright and Database Rights (2025) Licence OS100024241 and AC000087948.

AUG-2025For DCO submissionEOSJPCKRIssueDateRemarksDrawnCheckedApprovedTitleTHE NATIONAL GRID (NORWICH TO TILBURY) ORDER TREES AND HEDGEROWS TO BE REMOVED AND OR MANAGED PLANS REGULATION 5(2)(o) SECTION D (SHEET 7 OF 9, COLCHESTER CITY COUNCIL)nationalgridPINS Application NumberEN020027National Grid Drawing ReferenceAENC-LSTC-ENG-DWG-0002Scale1:2,500Sheet SizeA0SheetSHEET 7 OF 9IssueA

FOR CONTINUATION SEE SHEET 6

FOR CONTINUATION SEE SHEET 8

COPYRIGHT: NOT TO BE REPRODUCED WITHOUT THE WRITTEN PERMISSION OF NATIONAL GRID ELECTRICITY TRANSMISSION PLC

The figure is a large-scale map showing land parcels, roads, and environmental features. Key locations include Aldham, Fiddler's Wood, Church House Wood, and Aldam Hall Wood. Roads shown are A1124 Halstead Road, Brook Road, Rectory Road, and Green Lane. The map uses various colors and symbols to indicate different types of trees and hedgerows, as defined in the legend.

Legend

- Local authority boundary:** Solid black line.
- Section boundary & local authority boundary:** Dashed black line.
- Section boundary:** Thin solid grey line.
- Sheet index cutlines:** Thick dashed red line.
- Order Limits:** Red outline.
- Individual Tree Preservation Order:** Green shaded area.
- Ancient woodland (Natural England):** Orange hatched area.
- Project defined ancient woodland:** Yellow hatched area.
- Veteran tree group:** Blue dashed line.
- Important hedgerows:** Green dashed line.

Veteran tree

Removed
Affected managed
Potentially affected
Unaffected

Tree

Removed
Affected managed
Potentially affected
Unaffected

Tree groups

Removed
Affected managed
Potentially affected
Unaffected

Hedgerows

Removed
Affected managed
Potentially affected
Unaffected

Notes

- These plans are indicative and the Project will sit within the Order Limits. Due to the need for future flexibility, National Grid will be applying for Order Limits and Limits of Deviation within its DCO, within which any final alignment would lie.
- For additional detail on the plan suites, please refer to the Guide to Plans (document reference 2.0), located in the Volume 2 of the DCO application.
- This drawing is scaled at paper size A0, therefore any prints taken at smaller sizes will affect accuracy of the measurement units and should not be scaled against.
- Spatial locations and details of Tree Preservation Orders have been provided by relevant Local Planning Authorities and their projected spatial locations may differ slightly to those recorded during the arboricultural survey undertaken by the Project. For the avoidance of doubt, references to any tree subject to a Tree Preservation Order on these plans include any such slight differences.
- The Tree Preservation Order data illustrated on the plans is limited to the arboriculture study area (which applies a 30 m buffer from the outer edge of the Order Limits).
- Reference to any tree, shrub, shrubbery, hedgerow, or important hedgerow being removed, affected managed, potentially affected or unaffected is without prejudice to the exercise of any power in relation to such tree, shrub, shrubbery, hedgerow, or important hedgerow on the terms of the DCO.
- The numbered references to trees comprised in any Individual Tree Preservation Order shown on these plans include any tree to which the relevant line points as well as any tree overlapping any such tree, whether or not a line points to it or not.
- For the avoidance of doubt, where the section and/or local authority boundary and/or Order Limits shown on these plans overlap any tree, hedgerow or ancient woodland shown on these plans such that they are partially obscured these plans are to be interpreted as if the tree, hedgerow or ancient woodland in question is not so obscured.

Coordinate System: British National Grid

Sheet X Centroid Coordinate: 591921 Sheet Y Centroid Coordinate: 225628

Scale bar: 0 to 250 Metres

BACKGROUND MAPPING INFORMATION HAS BEEN REPRODUCED FROM THE ORDNANCE SURVEY BY PERMISSION OF ORDNANCE SURVEY OF THE CONTROLLER OF HIS MAJESTY'S STATIONERY OFFICE. © CROWN COPYRIGHT AND DATABASE RIGHTS (2025) LICENCE OS100024241 AND AC0000807948.

Issue	Date	Remarks	Drawn	Checked	Approved
A	AUG-2025	For DCO submission	EOS	JPC	KR

Title

THE NATIONAL GRID
(NORWICH TO TILBURY) ORDER
TREES AND HEDGEROWS TO BE REMOVED
AND OR MANAGED PLANS
REGULATION 5(2)(o)
SECTION D (SHEET 7 OF 9,
COLCHESTER CITY COUNCIL)

nationalgrid

PINS Application Number

EN020027

National Grid Drawing Reference

AENC-LSTC-ENG-DWG-0002

Scale	Sheet Size	Sheet	Issue
1:2,500	A0	SHEET 7 OF 9	A

COPYRIGHT NOT TO BE REPRODUCED WITHOUT THE WRITTEN PERMISSION OF NATIONAL GRID ELECTRICITY TRANSMISSION PLC

**THE NATIONAL GRID (NORWICH TO TILBURY) ORDER
TREES AND HEDGEROWS TO BE REMOVED AND OR MANAGED PLANS
REGULATION 5(2)(o)
SECTION D (SHEET 7 OF 9,
COLCHESTER CITY COUNCIL)**

Application Document 2.16

SITE MAP

Legend

- Local authority boundary
- Section boundary & local authority boundary
- Section boundary
- Sheet index cutlines
- Order Limits
- Individual Tree Preservation Order
- Ancient woodland (Natural England)
- Project defined ancient woodland
- Veteran tree group
- Important hedgerows

Veteran tree

- Removed
- Affected managed
- Potentially affected
- Unaffected

Tree

- Removed
- Affected managed
- Potentially affected
- Unaffected

Tree groups

- Removed
- Affected managed
- Potentially affected
- Unaffected

Hedgerows

- Removed
- Affected managed
- Potentially affected
- Unaffected

Notes

- These plans are indicative and the Project will sit within the Order Limits. Due to the need for future flexibility, National Grid will be applying for Order Limits and Limits of Deviation within its DCO, within which any final alignment would lie.
- For additional detail on the plan suites, please refer to the Guide to Plans (document reference 2.0), located in the Volume 2 of the DCO application.
- This drawing is scaled at paper size A0, therefore any prints taken at smaller sizes will affect accuracy of the measurement units and should not be scaled against.
- Spatial locations and details of Tree Preservation Orders have been provided by relevant Local Planning Authorities and their projected spatial locations may differ slightly to those recorded during the arboricultural survey undertaken by the Project. For the avoidance of doubt, references to any tree subject to a Tree Preservation Order on these plans include any such slight differences.
- The Tree Preservation Order data illustrated on the plans is limited to the arboriculture study area (which applies a 30 m buffer from the outer edge of the Order Limits).
- Reference to any tree, shrub, shrubby, or important hedgerow being removed, affected managed, potentially affected or unaffected is without prejudice to the exercise of any power in relation to such tree, shrub, shrubby, hedgerow, or important hedgerow on the terms of the DCO.
- The numbered references to trees comprised in any Individual Tree Preservation Order shown on these plans include any tree to which the relevant line points as well as any tree overlapping any such tree, whether or not a line points to it or not.
- For the avoidance of doubt, where the section and/or local authority boundary and/or Order Limits shown on these plans overlap any tree, hedgerow or ancient woodland shown on these plans such that they are partially obscured these plans are to be interpreted as if the tree, hedgerow or ancient woodland in question is not so obscured.

Coordinate System: British National Grid
Sheet X Centroid Coordinate: 591921 Sheet Y Centroid Coordinate: 225628

BACKGROUND MAPPING INFORMATION HAS BEEN REPRODUCED FROM THE ORDNANCE SURVEY BY PERMISSION OF ORDNANCE SURVEY OF THE CONTROLLER OF HIS MAJESTY'S STATIONERY OFFICE. © CROWN COPYRIGHT AND DATABASE RIGHTS (2025) LICENCE OS100024241 AND AC0000807948.

Issue	Date	Remarks	Drawn	Checked	Approved
A	AUG-2025	For DCO submission	EOS	JPC	KR

Title

**THE NATIONAL GRID
(NORWICH TO TILBURY) ORDER
TREES AND HEDGEROWS TO BE REMOVED
AND OR MANAGED PLANS
REGULATION 5(2)(o)
SECTION D (SHEET 7 OF 9,
COLCHESTER CITY COUNCIL)**

nationalgrid

PINS Application Number		EN020027	
National Grid Drawing Reference			
AENC-LSTC-ENG-DWG-0002			
Scale	Sheet Size	Sheet	Issue
1:2,500	A0	SHEET 7 OF 9	A

COPYRIGHT: NOT TO BE REPRODUCED WITHOUT THE WRITTEN PERMISSION OF NATIONAL GRID ELECTRICITY TRANSMISSION PLC

THE NATIONAL GRID (NORWICH TO TILBURY) ORDER
TREES AND HEDGEROWS TO BE REMOVED AND OR MANAGED PLANS
REGULATION 5(2)(o)
SECTION D (SHEET 7 OF 9,
COLCHESTER CITY COUNCIL)

Application Document 2.16

SITE MAP

D

Legend

Veteran tree

Tree

Tree groups

Hedgerows

Notes

Coordinate System: British National Grid

Sheet X Centroid Coordinate: 591921

Sheet Y Centroid Coordinate: 225628

BACKGROUND MAPPING INFORMATION HAS BEEN REPRODUCED FROM THE ORDNANCE SURVEY BY PERMISSION OF ORDNANCE SURVEY OF THE CONTROLLER OF HIS MAJESTY'S STATIONERY OFFICE. © CROWN COPYRIGHT AND DATABASE RIGHTS (2025) LICENCE OS100024241 AND AC0000807948.

AUG-2025For DCO submissionEOSJPCKRIssueDateRemarksDrawnCheckedApproved

TitleTHE NATIONAL GRID (NORWICH TO TILBURY) ORDER TREES AND HEDGEROWS TO BE REMOVED AND OR MANAGED PLANS REGULATION 5(2)(o) SECTION D (SHEET 7 OF 9, COLCHESTER CITY COUNCIL)

nationalgrid

PINS Application NumberEN020027

National Grid Drawing ReferenceAENC-LSTC-ENG-DWG-0002

Scale1:2,500Sheet SizeA0SheetSHEET 7 OF 9IssueA

THE NATIONAL GRID (NORWICH TO TILBURY) ORDER
TREES AND HEDGEROWS TO BE REMOVED AND OR MANAGED PLANS
REGULATION 5(2)(o)
SECTION D (SHEET 7 OF 9,
COLCHESTER CITY COUNCIL)

Application Document 2.16

SITE MAP

D

Legend

Veteran tree

Tree

Tree groups

Hedgerows

Notes

Coordinate System: British National Grid

Sheet X Centroid Coordinate: 591921

Sheet Y Centroid Coordinate: 225628

BACKGROUND MAPPING INFORMATION HAS BEEN REPRODUCED FROM THE ORDNANCE SURVEY BY PERMISSION OF ORDNANCE SURVEY OF THE CONTROLLER OF HIS MAJESTY'S STATIONERY OFFICE. © CROWN COPYRIGHT AND DATABASE RIGHTS (2025) LICENCE OS100024241 AND AC000087948.

AUG-2025For DCO submissionEOSJPCKR

TitleTHE NATIONAL GRID (NORWICH TO TILBURY) ORDER TREES AND HEDGEROWS TO BE REMOVED AND OR MANAGED PLANS REGULATION 5(2)(o) SECTION D (SHEET 7 OF 9, COLCHESTER CITY COUNCIL)

nationalgrid

PINS Application NumberEN020027

National Grid Drawing ReferenceAENC-LSTC-ENG-DWG-0002

Scale1:2,500

Sheet SizeA0

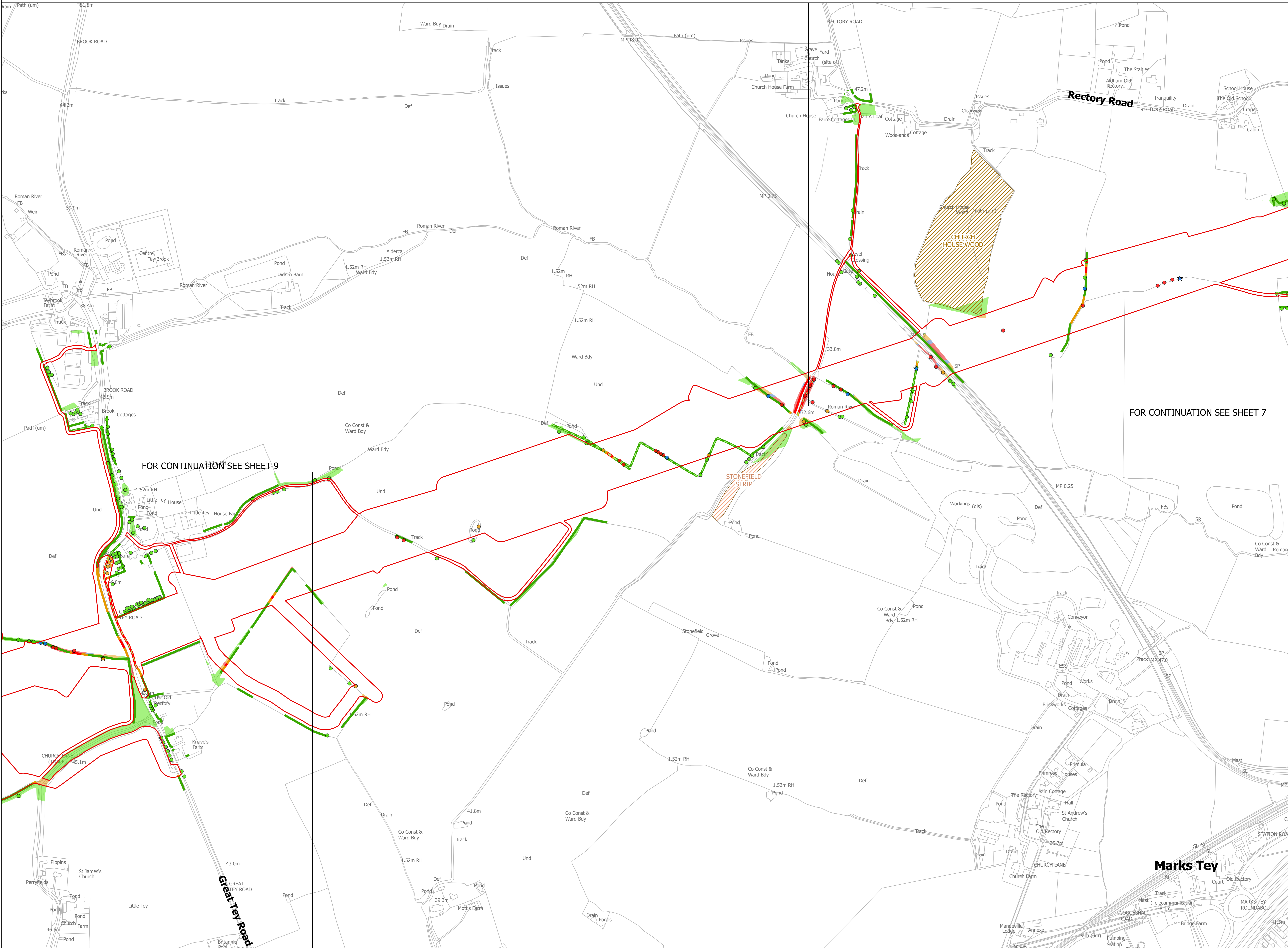
SheetSHEET 7 OF 9

IssueA

FOR CONTINUATION SEE SHEET 6

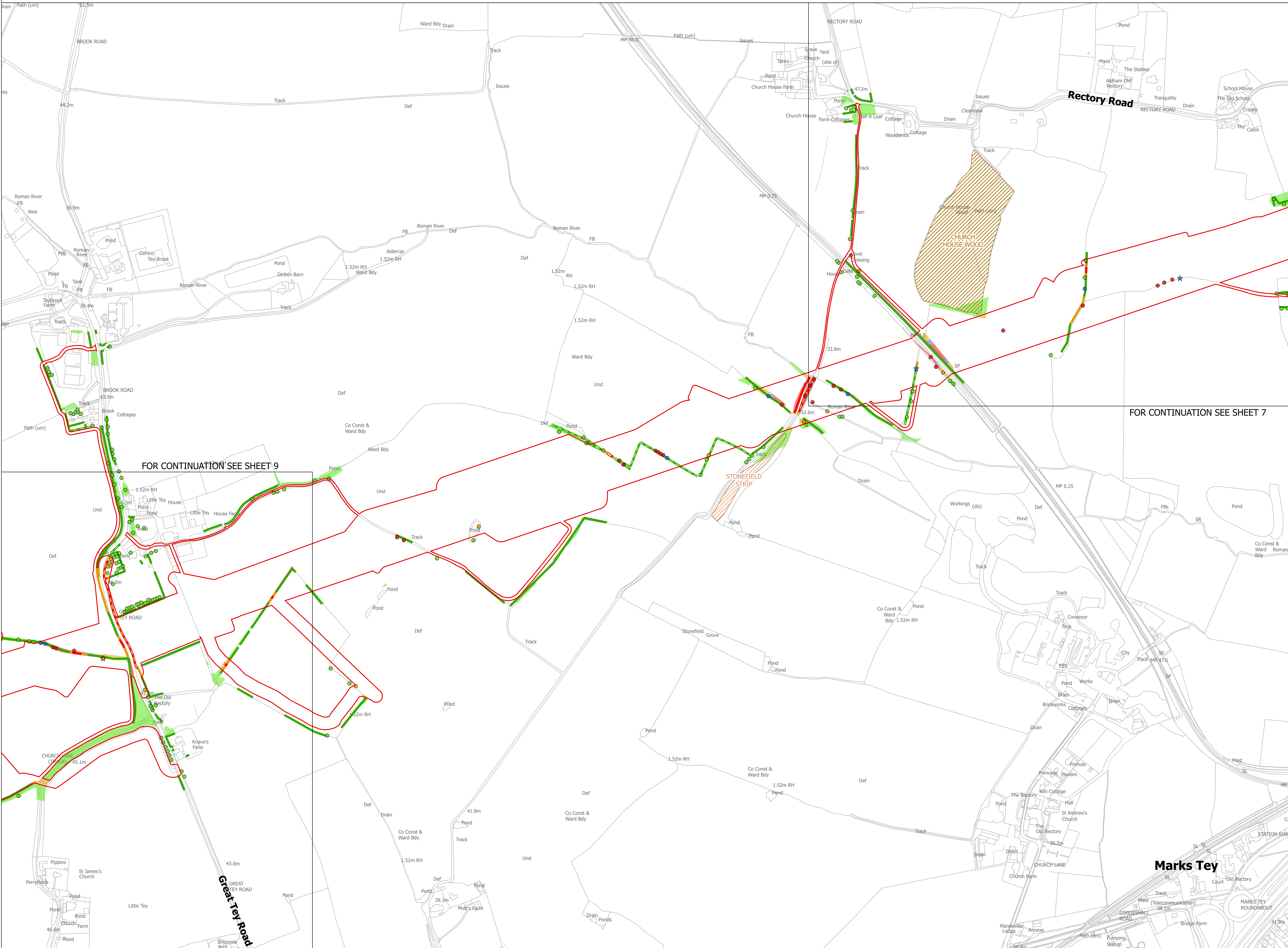
FOR CONTINUATION SEE SHEET 8

COPYRIGHT: NOT TO BE REPRODUCED WITHOUT THE WRITTEN PERMISSION OF NATIONAL GRID ELECTRICITY TRANSMISSION PLC



The map displays a proposed railway alignment through a rural landscape. Key features include:

- Roads:** Rectory Road, Brook Road, Great Tey Road, Church Lane, and Station Road.
- Rivers and Water Features:** Roman River, Brook, and several ponds.
- Buildings and Landmarks:** Church House, Little Tey House, The Old Rectory, and Marks Tey Roundabout.
- Proposed Route:** Indicated by red and green lines, showing a path that winds through the area, crossing roads and rivers.
- Stonefield Strip:** A specific area highlighted in orange, likely indicating a proposed station or a key section of the route.
- Continuation Labels:** "FOR CONTINUATION SEE SHEET 9" and "FOR CONTINUATION SEE SHEET 7" are placed at the edges of the map to indicate its position within a larger project.

[illegible]

-
- The map displays a proposed railway route through a rural landscape. Key features include:
- Roads:** Rectory Road, Brook Road, Great Tey Road, Church Lane, and Station Road.
 - Rivers and Water Bodies:** Roman River, Little Tey, and several ponds.
 - Buildings and Landmarks:** Church House, Little Tey House, The Old Rectory, and Marks Tey Roundabout.
 - Proposed Route:** Indicated by red and green lines, showing a path through the landscape.
 - Stonefield Strip:** A specific area highlighted in orange, likely a proposed crossing or bridge.
 - Continuation Labels:** "FOR CONTINUATION SEE SHEET 9" and "FOR CONTINUATION SEE SHEET 7" are placed at the edges of the map.

The map displays a proposed railway route through a rural landscape. Key features include:

- Roads:** Rectory Road, Brook Road, Great Tey Road, Church Lane, and Station Road.
- Rivers and Water Bodies:** Roman River, Little Tey, and several ponds.
- Buildings and Landmarks:** Church House, Little Tey House, The Old Rectory, and Marks Tey Roundabout.
- Proposed Route:** Indicated by red and green lines, showing a path through the landscape.
- Stonefield Strip:** A specific area highlighted in orange, likely a proposed crossing or bridge.
- Continuation Labels:** "FOR CONTINUATION SEE SHEET 9" and "FOR CONTINUATION SEE SHEET 7" are placed at the edges of the map.

-
- The map displays a proposed railway route through a rural landscape. Key features include:
- Roads:** Rectory Road, Brook Road, Great Tey Road, Church Lane, and Station Road.
 - Rivers and Water Bodies:** Roman River, Little Tey, and various ponds.
 - Buildings and Landmarks:** Church House, Little Tey House, The Old Rectory, and Marks Tey Roundabout.
 - Proposed Route:** Indicated by red and green lines, showing a path through the landscape.
 - Stonefield Strip:** A specific area highlighted in orange, likely a site of interest or a proposed station.
 - Continuation Labels:** "FOR CONTINUATION SEE SHEET 9" and "FOR CONTINUATION SEE SHEET 7" are placed at the edges of the map.

[illegible]

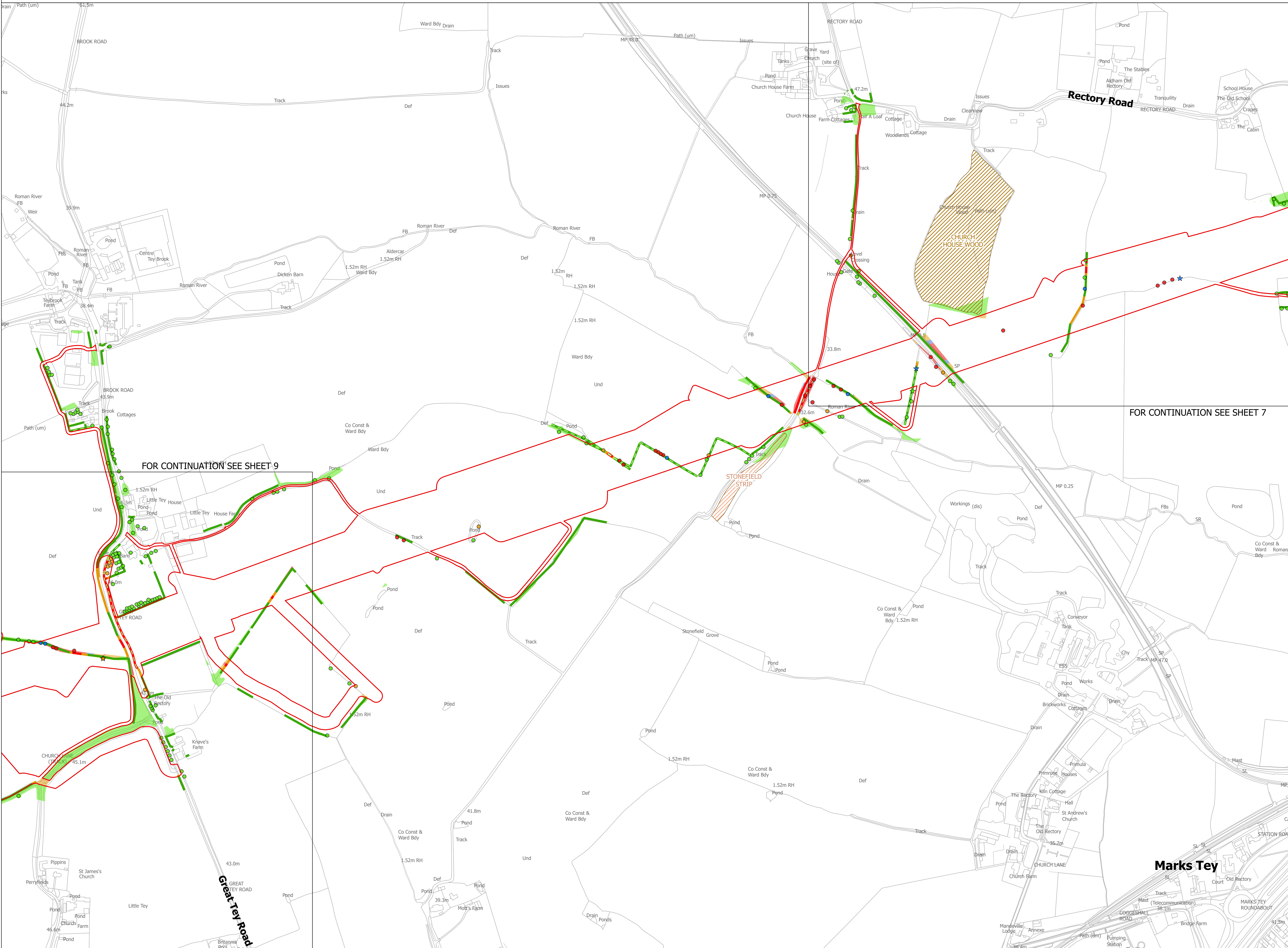
-
- The map displays a proposed railway route through a rural landscape. Key features include:
- Roads:** Rectory Road, Brook Road, Great Tey Road, Church Lane, and Station Road.
 - Rivers and Water Features:** Roman River, Brook, and several ponds.
 - Buildings and Landmarks:** Church House, Little Tey House, The Old Rectory, and Marks Tey Roundabout.
 - Proposed Route:** Indicated by red and green lines, showing a path through the landscape.
 - Stonefield Strip:** A specific area highlighted in orange, likely indicating a proposed station or a key feature.
 - Continuation Labels:** "FOR CONTINUATION SEE SHEET 9" and "FOR CONTINUATION SEE SHEET 7" are placed at the edges of the map.

-

The map displays a proposed railway alignment through a rural landscape. Key features include:

- Roads:** Rectory Road, Brook Road, Great Tey Road, Church Lane, and Station Road.
- Rivers and Water Features:** Roman River, Brook, and several ponds.
- Buildings and Landmarks:** Church House, Little Tey House, The Old Rectory, and Marks Tey Roundabout.
- Proposed Route:** Indicated by red and green lines, showing a path that winds through the area, crossing roads and rivers.
- Stonefield Strip:** A specific area highlighted in orange, likely indicating a proposed station or a key section of the route.
- Continuation Labels:** "FOR CONTINUATION SEE SHEET 9" and "FOR CONTINUATION SEE SHEET 7" are placed at the edges of the map to indicate its position within a larger project.

-

[illegible][illegible]

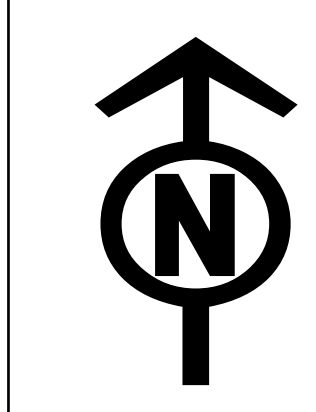
The map displays a proposed railway alignment through a rural landscape. Key features include:

- Roads:** Rectory Road, Brook Road, Great Tey Road, Church Lane, and Station Road.
- Rivers and Water Features:** Roman River, Brook, and several ponds.
- Buildings and Landmarks:** Church House, Little Tey House, The Old Rectory, and Marks Tey Roundabout.
- Proposed Route:** Indicated by red and green lines, showing a path that winds through the area, crossing roads and rivers.
- Stonefield Strip:** A specific area highlighted in orange, likely indicating a proposed station or a key section of the route.
- Continuation Labels:** "FOR CONTINUATION SEE SHEET 9" and "FOR CONTINUATION SEE SHEET 7" are placed at the edges of the map to indicate its position within a larger project.

[illegible]

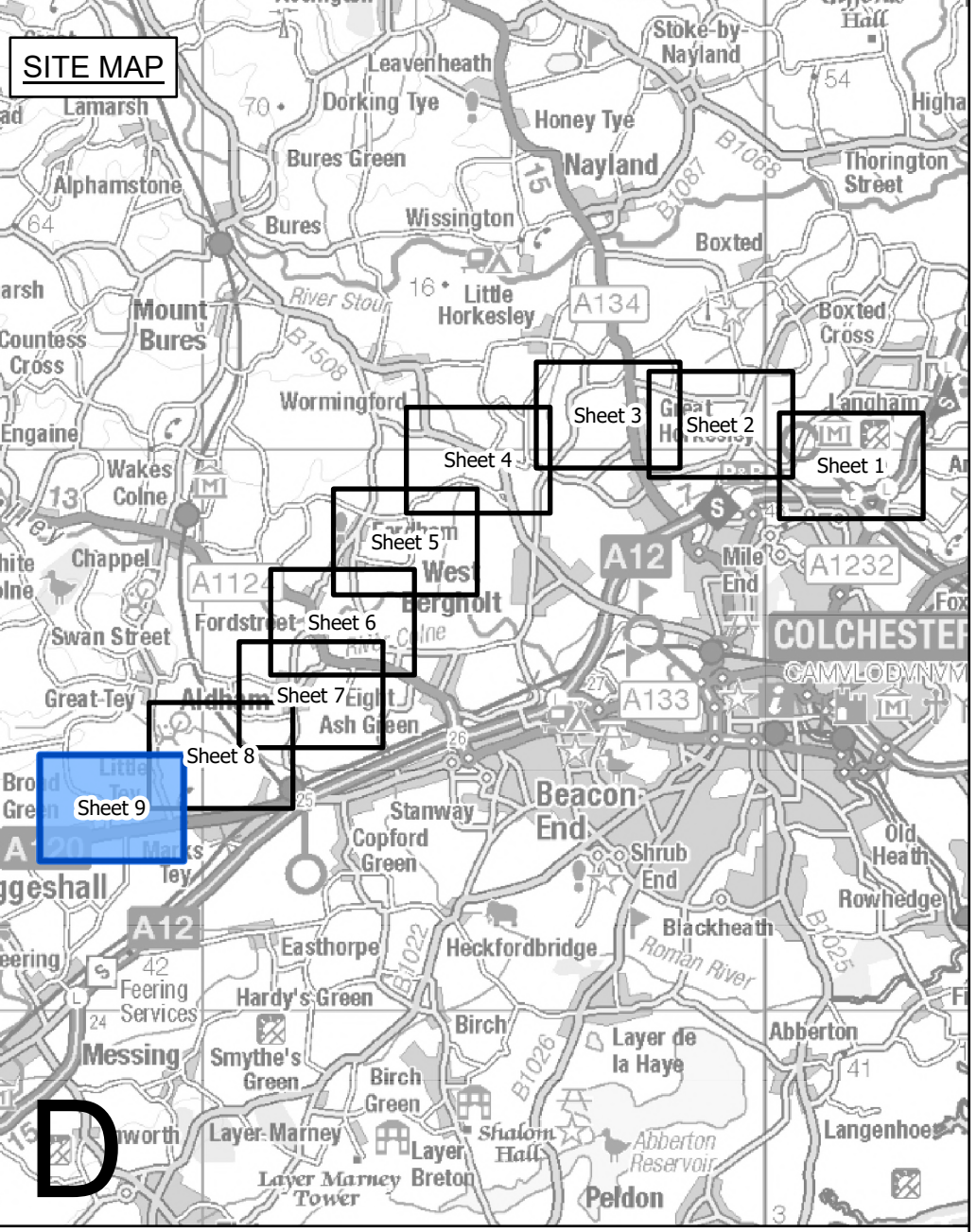
The map illustrates a proposed railway route through the Marks Tey area. The route is marked with a red line, with green segments indicating specific sections. The route begins near the top left, follows Brook Road, then turns south, passing through Church House Farm and Church House. It then turns east, passing through Church Lane and Marks Tey Roundabout, before heading south-east towards Marks Tey. The map includes various landmarks such as Brook Road, Rectory Road, Church Lane, and Great Tey Road. It also features numerous labels for buildings, farms, and natural features like ponds and drains. The route is marked with a red line, with green segments indicating specific sections. The map is divided into sections by dashed lines, with labels like "FOR CONTINUATION SEE SHEET 9" and "FOR CONTINUATION SEE SHEET 7".

[illegible]



THE NATIONAL GRID (NORWICH TO TILBURY) ORDER
TREES AND HEDGEROWS TO BE REMOVED AND OR MANAGED PLANS
REGULATION 5(2)(o)
SECTION D (SHEET 9 OF 9,
COLCHESTER CITY COUNCIL AND BRAINTREE DISTRICT COUNCIL)

Application Document 2.16



Legend

- Local authority boundary
- Section boundary & local authority boundary
- Section boundary
- Sheet index cutlines
- Order Limits
- Individual Tree Preservation Order
- Ancient woodland (Natural England)
- Project defined ancient woodland
- Veteran tree group
- Important hedgerows

Veteran tree

- Removed
- Affected managed
- Potentially affected
- Unaffected

Tree

- Removed
- Affected managed
- Potentially affected
- Unaffected

Tree groups

- Removed
- Affected managed
- Potentially affected
- Unaffected

Hedgerows

- Removed
- Affected managed
- Potentially affected
- Unaffected

Notes

- These plans are indicative and the Project will sit within the Order Limits. Due to the need for future flexibility, National Grid will be applying for Order Limits and Limits of Deviation within its DCO, within which any final alignment would lie.
- For additional detail on the plan suites, please refer to the Guide to Plans (document reference 2.0), located in the Volume 2 of the DCO application.
- This drawing is scaled at paper size A0, therefore any prints taken at smaller sizes will affect accuracy of the measurement units and should not be scaled against.
- Spatial locations and details of Tree Preservation Orders have been provided by relevant Local Planning Authorities and their projected spatial locations may differ slightly to those recorded during the arboricultural survey undertaken by the Project. For the avoidance of doubt, references to any tree subject to a Tree Preservation Order on these plans include any such slight differences.
- The Tree Preservation Order data illustrated on the plans is limited to the arboriculture study area (which applies a 30 m buffer from the outer edge of the Order Limits).
- Reference to any tree, shrub, shrubbery, hedgerow, or important hedgerow being removed, affected managed, potentially affected or unaffected is without prejudice to the exercise of any power in relation to such tree, shrub, shrubbery, hedgerow, or important hedgerow on the terms of the DCO.
- The numbered references to trees comprised in any Individual Tree Preservation Order shown on these plans include any tree to which the relevant line points as well as any tree overlapping any such tree, whether or not a line points to it or not.
- For the avoidance of doubt, where the section and/or local authority boundary and/or Order Limits shown on these plans overlap any tree, hedgerow or ancient woodland shown on these plans such that they are partially obscured these plans are to be interpreted as if the tree, hedgerow or ancient woodland in question is not so obscured.

Coordinate System: British National Grid
Sheet X Centroid Coordinate: 588378 Sheet Y Centroid Coordinate: 223611

0 50 100 150 200 250 Metres

BACKGROUND MAPPING INFORMATION HAS BEEN REPRODUCED FROM THE ORDNANCE SURVEY BY PERMISSION OF ORDNANCE SURVEY OF THE CONTROLLER OF HIS MAJESTY'S STATIONERY OFFICE. © CROWN COPYRIGHT AND DATABASE RIGHTS (2025) LICENCE OS100024241 AND AC0000807948.

A	AUG-2025	For DCO submission	EOS	JPC	KR
Issue	Date	Remarks	Drawn	Checked	Approved
<u>Title</u>					
THE NATIONAL GRID (NORWICH TO TILBURY) ORDER TREES AND HEDGEROWS TO BE REMOVED AND OR MANAGED PLANS REGULATION 5(2)(o) SECTION D (SHEET 9 OF 9, COLCHESTER CITY COUNCIL AND BRAINTREE DISTRICT COUNCIL)					
nationalgrid					
PINS Application Number		EN020027			
National Grid Drawing Reference					
AENC-LSTC-ENG-DWG-0002					
Scale	Sheet Size	Sheet	Issue		
1:2,500	A0	SHEET 9 OF 9	A		